

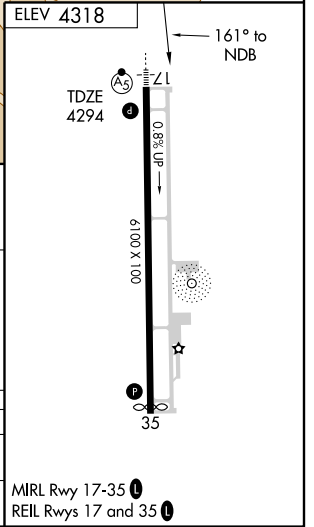
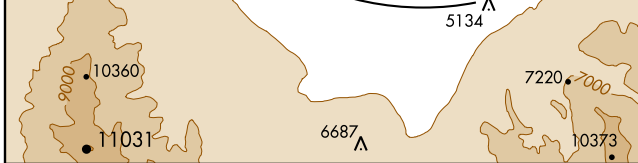
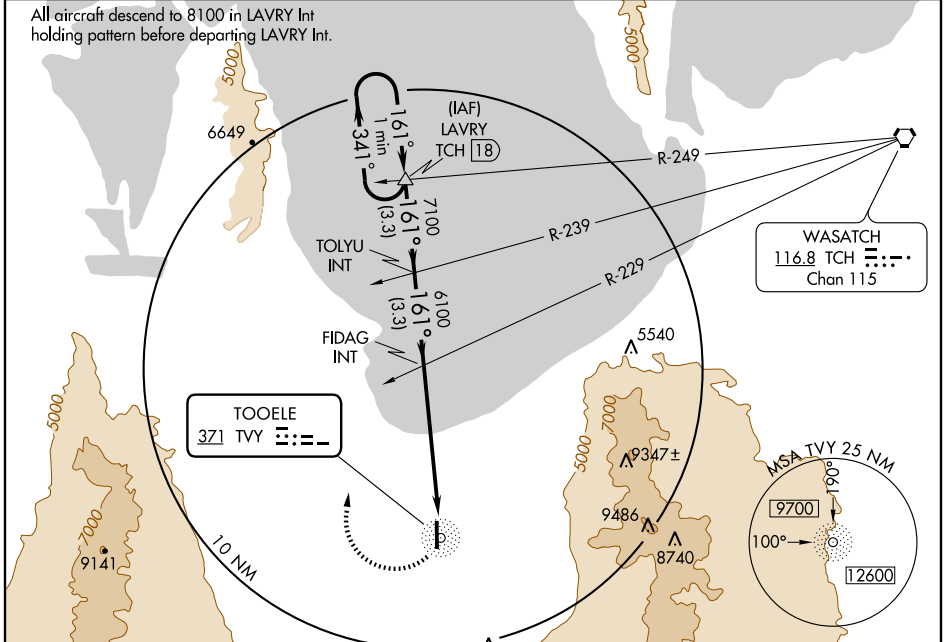
# NDB RWY 17

TOOELE / BOLINDER FIELD-TOOELE VALLEY (TVY)

NDB TVY <b>371</b>	APP CRS <b>161°</b>	Rwy Idg <b>6100</b>
		TDZE <b>4294</b>
		Apt Elev <b>4318</b>

NA Use Salt Lake City Int allimeter setting. Circling NA at night to Rwy 35.	MALSR	MISSED APPROACH: Climbing right turn to 9000 via the 341° bearing from TVY NDB to LAVRY Int and hold.

AWOS-3 <b>119.725</b>	SALT LAKE CITY APP CON <b>135.5 316.15</b>	CLNC DEL <b>124.4</b>	UNICOM <b>123.0 (CTAF)</b>
--------------------------	---	--------------------------	-------------------------------



One Minute Holding Pattern	LAVRY INT TCH 18	9000	LAVRY INT
8100	7100	6100	NDB
← 341°	→ 161°	→ 341°	
		3.00°	TCH 45
	3.3 NM	3.3 NM	5.6 NM

CATEGORY	A	B	C	D
S-17	5020-1	726 (800-1)	5020-2 726 (800-2)	5020-2¼ 726 (800-2¼)
CIRCLING	5020-1	702 (800-1)	5020-2 702 (800-2)	5020-2¼ 702 (800-2¼)

MRL Rwy 17-35  
REIL Rws 17 and 35

SW-4, 22 OCT 2009 to 19 NOV 2009

SW-4, 22 OCT 2009 to 19 NOV 2009