

BAKER, MONTANA

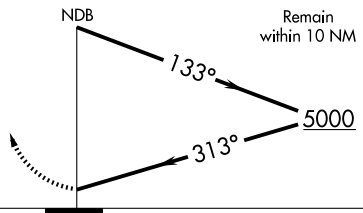
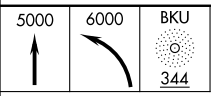
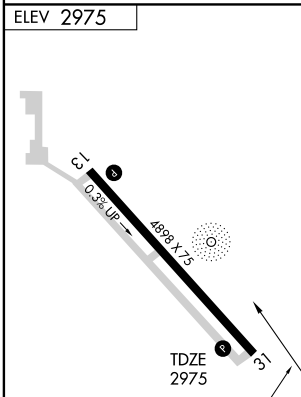
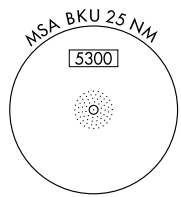
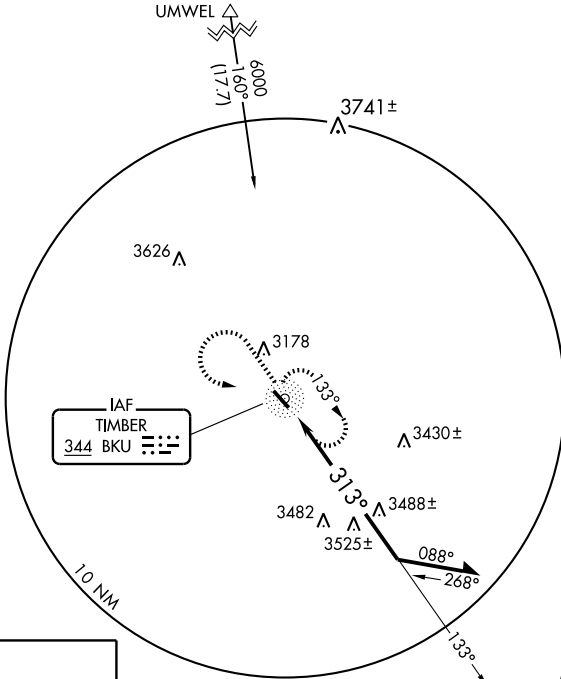
AL-6943 (FAA)

# NDB RWY 31 BAKER MUNI (BHK)

NDB BKU <b>344</b>	APP CRS <b>313°</b>	Rwy ldg TDZE Apt Elev	<b>4898</b> <b>2975</b> <b>2975</b>
-----------------------	------------------------	-----------------------------	---

MISSED APPROACH: Climb to 5000, then climbing left turn to 6000 direct BKU NDB and hold.

ASOS <b>135.475</b>	SALT LAKE CENTER <b>126.85 305.2</b>	CTAF <b>122.9</b>
------------------------	---	----------------------



CATEGORY	A	B	C	D
S-31	3880-1 1/4 905 (1000-1 1/4)		3880-2 3/4 905 (1000-2 3/4)	3880-3 905 (1000-3)
CIRCLING	3880-1 1/4 905 (1000-1 1/4)		3880-2 3/4 905 (1000-2 3/4)	3880-3 905 (1000-3)

BAKER, MONTANA  
Orig-A 09183

46°21'N-104°16'W

# BAKER MUNI (BHK) NDB RWY 31

NW-1, 22 OCT 2009 to 19 NOV 2009

NW-1, 22 OCT 2009 to 19 NOV 2009