

BAKER, MONTANA

AL-6943 (FAA)

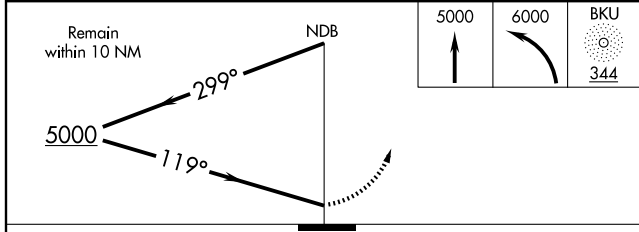
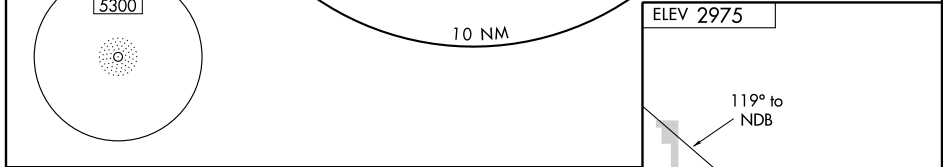
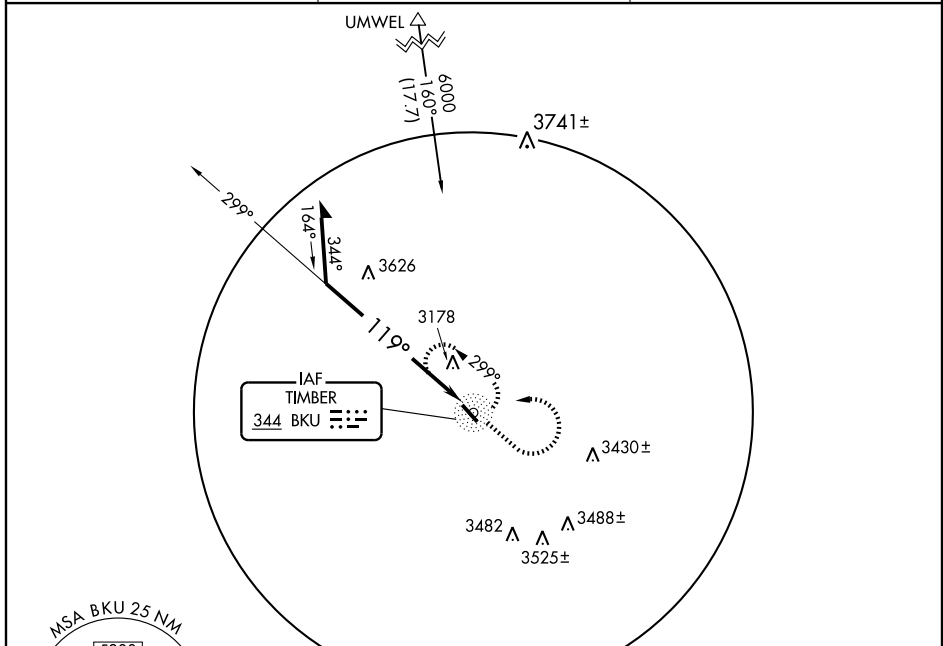
# NDB RWY 13 BAKER MUNI (BHK)

NDB BKU <b>344</b>	APP CRS <b>119°</b>	Rwy ldg TDZE Apt Elev	<b>4898</b> <b>2974</b> <b>2975</b>
-----------------------	------------------------	-----------------------------	---

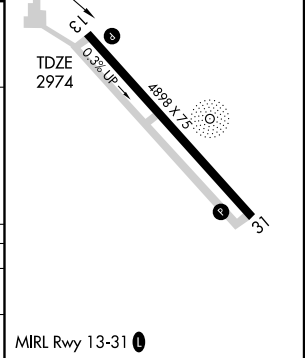
**▽**  
**▲**

MISSED APPROACH: Climb to 5000, then climbing left turn to 6000 direct BKU NDB and hold.

ASOS <b>135.475</b>	SALT LAKE CENTER <b>126.85 305.2</b>	CTAF <b>122.9</b>
------------------------	---	----------------------



CATEGORY	A	B	C	D
S-13	3980-1 ¼ 1006 (1100-1 ¼)	3980-1 ½ 1006 (1100-1 ½)	3980-3	1006 (1100-3)
CIRCLING	3980-1 ¼ 1005 (1100-1 ¼)	3980-1 ½ 1005 (1100-1 ½)	3980-3	1005 (1100-3)



NW-1, 22 OCT 2009 to 19 NOV 2009

NW-1, 22 OCT 2009 to 19 NOV 2009

BAKER, MONTANA  
Orig-A 09183

46°21'N-104°16'W

## BAKER MUNI (BHK) NDB RWY 13