

BAKER, MONTANA

AL-6943 (FAA)

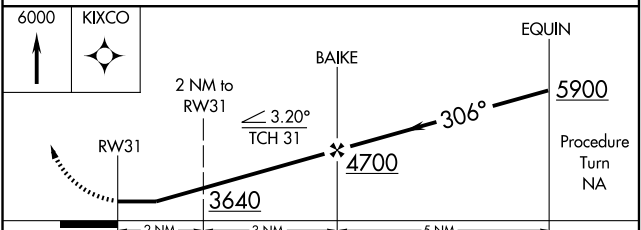
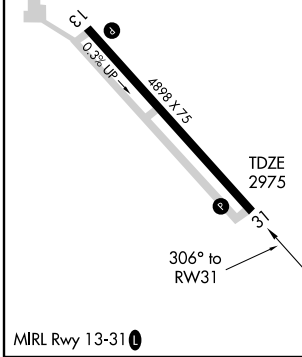
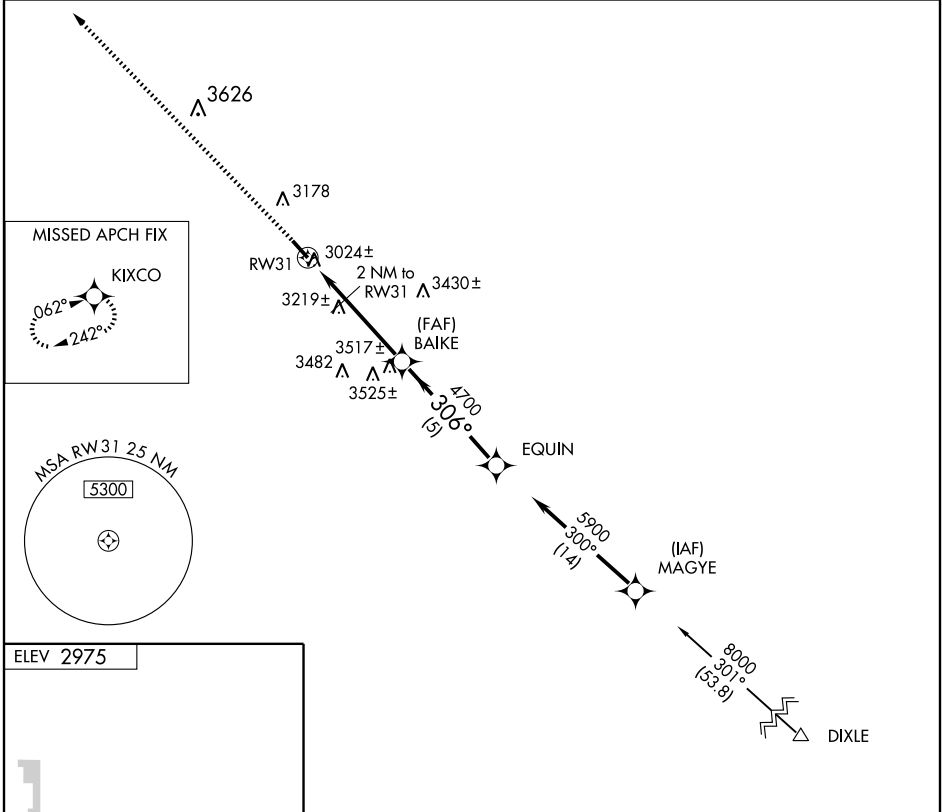
GPS RWY 31

BAKER MUNI (BHK)

APP CRS	Rwy Idg	4898
306°	TDZE	2975
	Apt Elev	2975

NA MISSED APPROACH: Climb to 6000 direct KIXCO WP and hold.

ASOS 135.475	SALT LAKE CENTER 126.85 305.2	CTAF 122.9
------------------------	---	----------------------



CATEGORY	A	B	C	D
S-31	3500-1	525 (600-1)	3500-1½ 525 (600-1½)	3500-1¾ 525 (600-1¾)
CIRCLING	3560-1	585 (600-1)	3560-1½ 585 (600-1½)	3560-2 585 (600-2)

BAKER, MONTANA
Orig-B 09183

46°21'N-104°16'W

BAKER MUNI (BHK)

GPS RWY 31

NW-1, 22 OCT 2009 to 19 NOV 2009

NW-1, 22 OCT 2009 to 19 NOV 2009