

RNAV (GPS) RWY 6

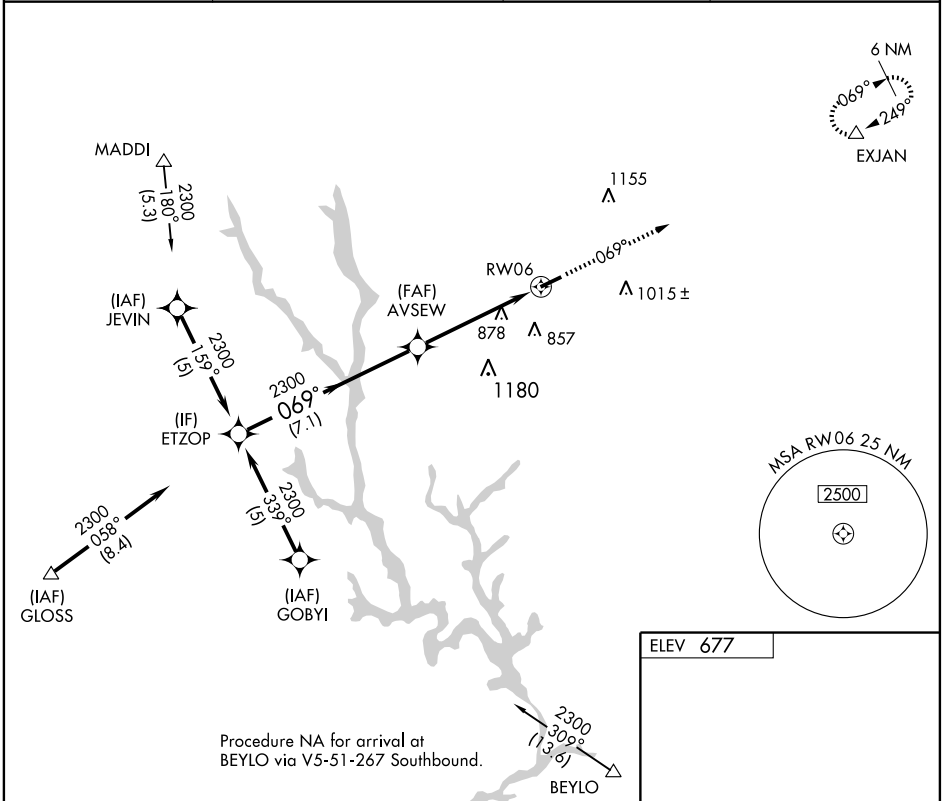
GREENSBORO/ GREENE COUNTY RGNL (3J7)

APP CRS	Rwy Idg	4904
069°	TDZE	677
	Apt Elev	677

NA DME/DME RNP-0.3 NA. When local altimeter setting not received, use Athens altimeter setting and increase all MDA 80 feet, LNAV Cat. C and D visibility ¼ mile, and Circling Cat. C visibility ¼ mile. VDP NA with Athens altimeter setting.

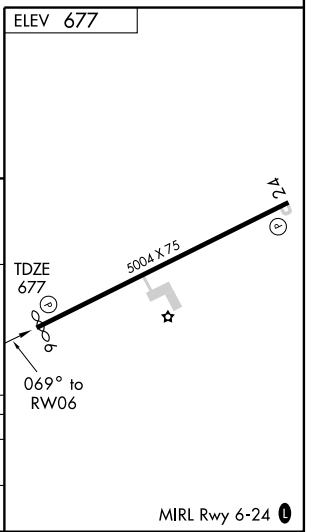
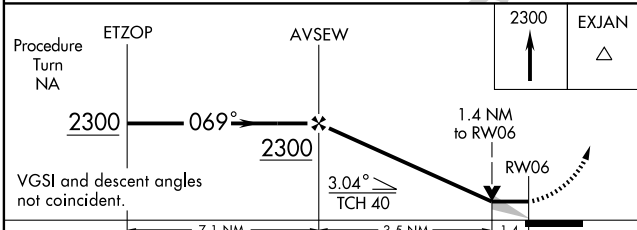
MISSED APPROACH: Climb to 2300 to EXJAN WP and hold.

AWOS-3 124.525	ATLANTA APP CON ★ 127.5 316.05	GCO 121.725	UNICOM 122.8(CTAF) 0
--------------------------	--	-----------------------	--------------------------------



SE-4, 22 OCT 2009 to 19 NOV 2009

SE-4, 22 OCT 2009 to 19 NOV 2009



CATEGORY	A	B	C	D
LNAV MDA	1160-1	483 (500-1)	1160-1½ 483 (500-1½)	1160-1½ 483 (500-1½)
CIRCLING	1220-1	543 (600-1)	1220-1½ 543 (600-1½)	1240-2 563 (600-2)