

RNAV (GPS)-A

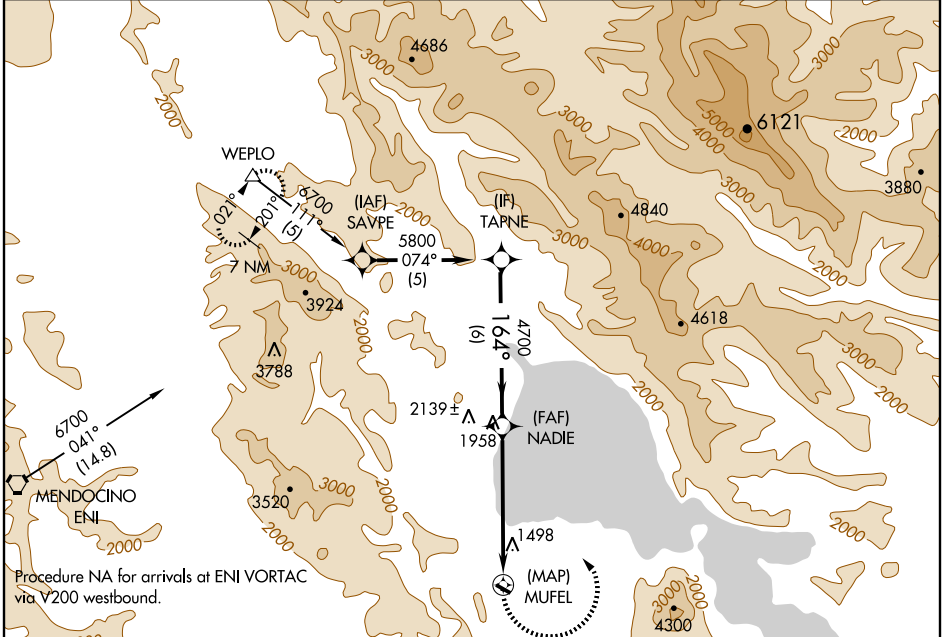
LAKEPORT/LAMPSON FIELD (102)

APP CRS 164°	Rwy Idg TDZE Apt Elev	N/A N/A 1379
------------------------	-----------------------------	---

▼ Circling NA south of Rwy 10 and 28. DME/DME RNP-0.3 NA.
▲ NA When local altimeter setting not received, use Ukiah altimeter setting and increase all MDA 560 feet.

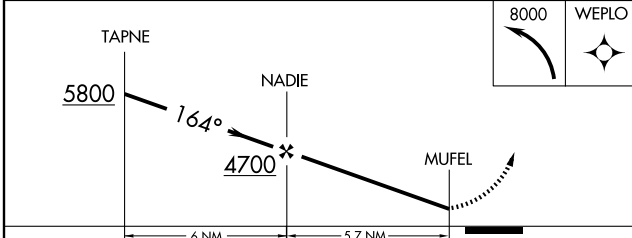
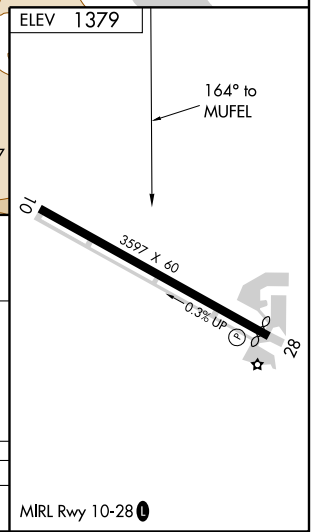
MISSED APPROACH: Climbing left turn to 8000 direct WEPLO and hold, continue climb-in-hold to 8000.

AWOS-2 118.35	OAKLAND CENTER 127.8 353.5	UNICOM 122.8 (CTAF) ①
-------------------------	--------------------------------------	---------------------------------



SW-2, 22 OCT 2009 to 19 NOV 2009

SW-2, 22 OCT 2009 to 19 NOV 2009



CATEGORY	A	B	C	D
CIRCLING	2520-1¼ 1141 (1200-1¼)	2520-1½ 1141 (1200-1½)	NA	NA

RNAV (GPS)-A

MIRL Rwy 10-28 ①