

TAYLOR, TEXAS

AL-6938 (FAA)

VORTAC CWK <b>112.8</b> Chan 75	APP CRS <b>194°</b>	Rwy ldg <b>4000</b> TDZE <b>600</b> Apt Elev <b>600</b>
---------------------------------------	------------------------	---

# VOR/DME RWY 17

TAYLOR MUNI (T74)

**▼** Use Austin-Bergstrom Intl altimeter setting, when  
**▲ NA** not received use Georgetown Muni altimeter setting.

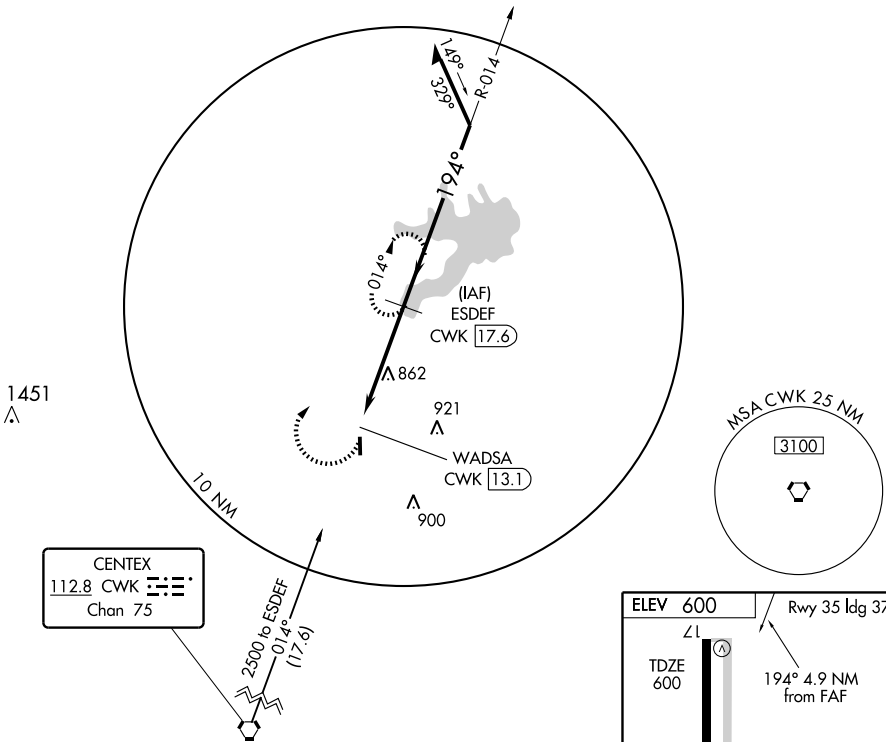
MISSED APPROACH: Climbing right turn to 2500 via CWK VORTAC R-014 to ESDEF/17.6 DME and hold.

AUSTIN APP CON  
**127.225 317.65**

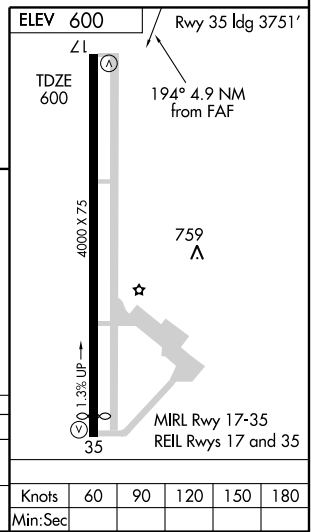
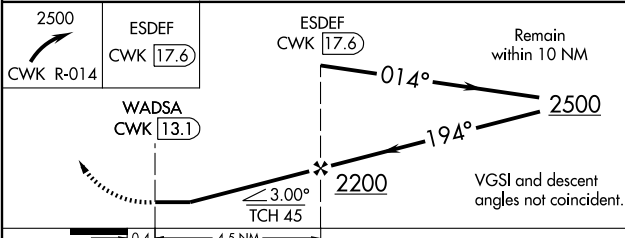
UNICOM  
**122.8 (CTAF)**

SC-3, 22 OCT 2009 to 19 NOV 2009

SC-3, 22 OCT 2009 to 19 NOV 2009



CENTEX  
**112.8** CWK   
Chan 75



CATEGORY	A	B	C	D
S-17	1180-1	580 (600-1)		NA
CIRCLING	1180-1	580 (600-1)		NA

Knots	60	90	120	150	180
Min:Sec					

TAYLOR, TEXAS  
Amdt 1 08269

30°34' N-97°27' W

# TAYLOR MUNI (T74) VOR/DME RWY 17