

CAMERON, MISSOURI

AL-6937 (FAA)

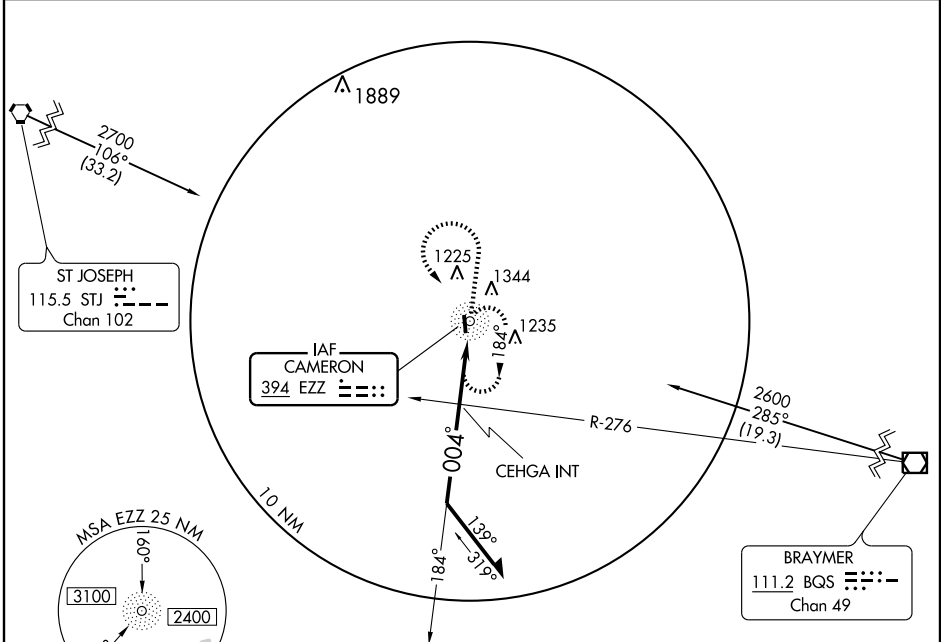
NDB RWY 35

CAMERON MEMORIAL (EZZ)

NDB EZZ 394	APP CRS 004°	Rwy ldg TDZE Apt Elev	4000 1037 1042
-----------------------	------------------------	-----------------------------	---

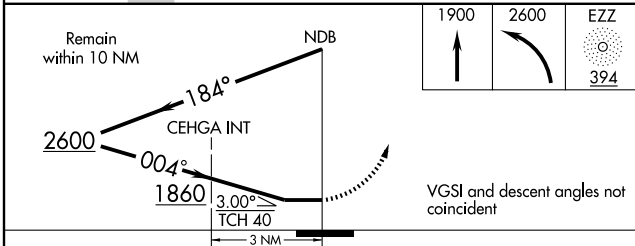
NA Use Kansas City Intl altimeter setting. MISSED APPROACH: Climb to 1900 then climbing left turn to 2600 direct EZZ NDB and hold.

KANSAS CITY APP CON 118.4 307.35	CINC DEL 121.6	UNICOM 122.8 (CTAF)
--	--------------------------	-------------------------------

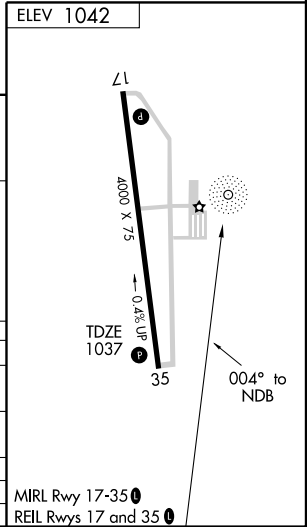


NC-3, 22 OCT 2009 to 19 NOV 2009

NC-3, 22 OCT 2009 to 19 NOV 2009



CATEGORY	A	B	C	D
S-35	1860-1 823 (900-1)	1860-1¼ 823 (900-1¼)		NA
CIRCLING	1860-1 818 (900-1)	1860-1¼ 818 (900-1¼)		NA
CEHGA INT MINIMUMS				
S-35	1560-1	523 (600-1)		NA
CIRCLING	1740-1	698 (700-1)		NA



CAMERON, MISSOURI
Amdt 2 09071

39°44'N - 94°17'W

CAMERON MEMORIAL (EZZ)

NDB RWY 35