

CHETEK, WISCONSIN

AL- 6935 (FAA)

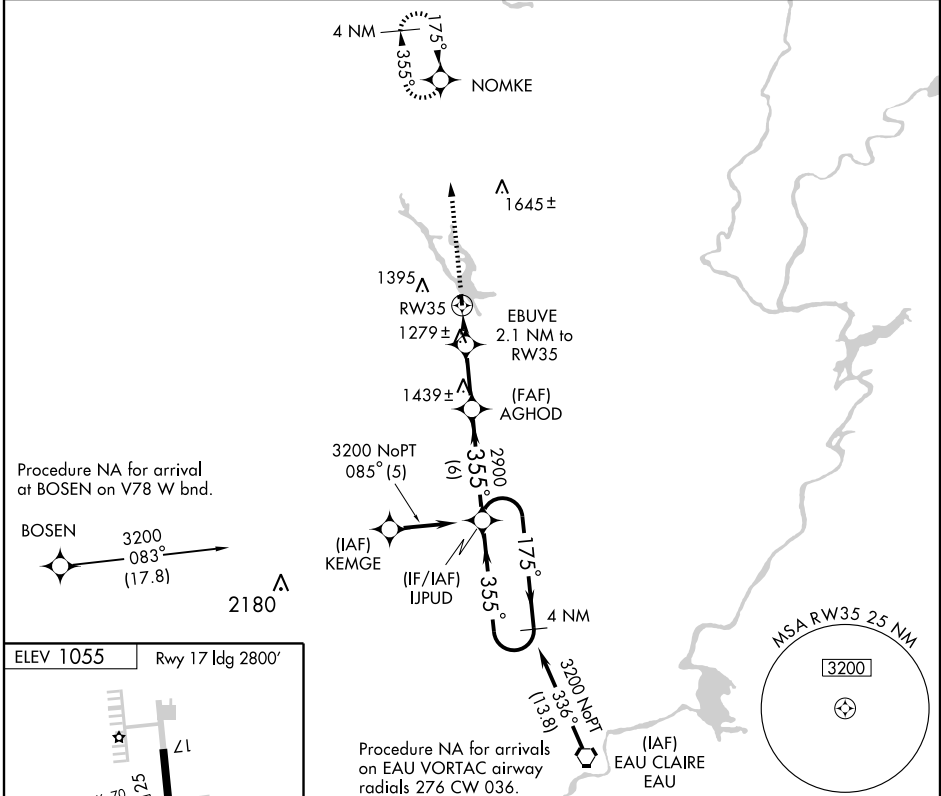
# RNAV (GPS) RWY 35

CHETEK MUNI-SOUTHWORTH (Y23)

APP CRS	Rwy ldg	<b>3400</b>
<b>355°</b>	TDZE	<b>1055</b>
	Apt Elev	<b>1055</b>

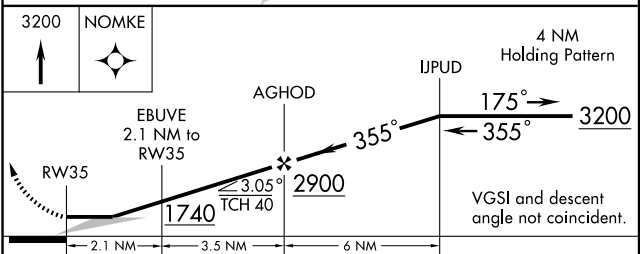
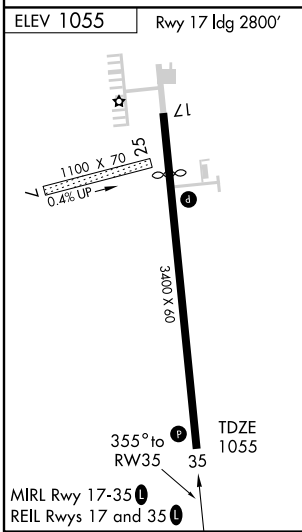
▲ NA	Use Rice Lake altimeter setting. GPS or RNP-0.3 Required. DME/DME RNP-0.3 NA.	MISSED APPROACH: Climb to 3200 direct NOMKE WP and hold.

RICE LAKE AWOS-3 <b>120.525</b>	MINNEAPOLIS CENTER <b>125.3 335.6</b>	CTAF <b>122.9 0</b>
------------------------------------	--	------------------------



EC-3, 22 OCT 2009 to 19 NOV 2009

EC-3, 22 OCT 2009 to 19 NOV 2009



CATEGORY	A	B	C	D
LNAV MDA	1580-1	525 (600-1)	1580-1½ 525 (600-1½)	NA
CIRCLING	1640-1	585 (600-1)	1640-1½ 585 (600-1½)	NA

CHETEK, WISCONSIN  
Orig-A 07018

45° 18' N - 91° 38' W

CHETEK MUNI-SOUTHWORTH (Y23)  
**RNAV (GPS) RWY 35**