

CHETEK, WISCONSIN

AL- 6935 (FAA)

# RNAV (GPS) RWY 17

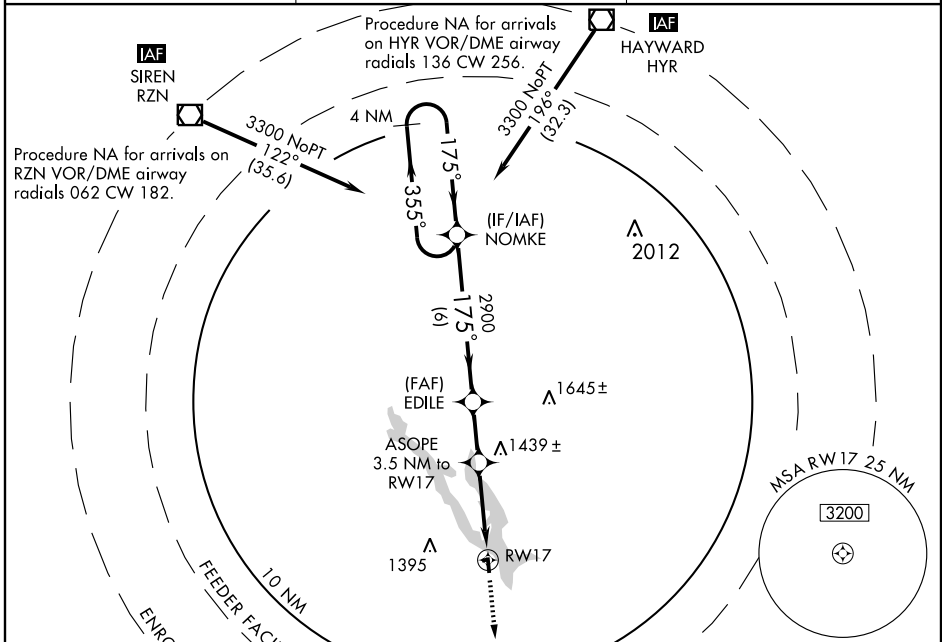
CHETEK MUNI-SOUTHWORTH (Y23)

APP CRS	Rwy Idg	<b>2800</b>
<b>175°</b>	TDZE	<b>1055</b>
	Apt Elev	<b>1055</b>

**▲ NA** **IAF** ARM APPROACH MODE PRIOR TO IAF.  
GPS or RNP-0.3 Required. DME/DME RNP-0.3 NA.  
Use Rice Lake altimeter setting.

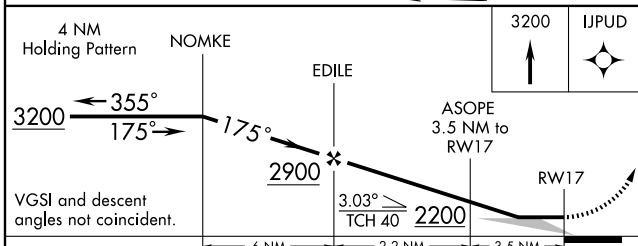
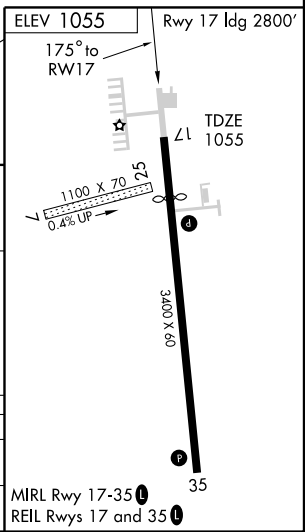
MISSED APPROACH: Climb to 3200  
direct IJPUD WP and hold.

RICE LAKE AWOS-3 <b>120.525</b>	MINNEAPOLIS CENTER <b>125.3 335.6</b>	CTAF <b>122.9</b>
------------------------------------	--	----------------------



EC-3, 22 OCT 2009 to 19 NOV 2009

EC-3, 22 OCT 2009 to 19 NOV 2009



CATEGORY	A	B	C	D
LNVA MDA	1640-1	585 (600-1)	1640-1½ 585 (600-1½)	NA
CIRCLING	1640-1	585 (600-1)	1640-1½ 585 (600-1½)	NA

CHETEK, WISCONSIN  
Orig-A 07018

45° 18' N - 91° 38' W

CHETEK MUNI-SOUTHWORTH (Y23)  
**RNAV (GPS) RWY 17**