

SULPHUR, LOUISIANA

AL-6934 (FAA)

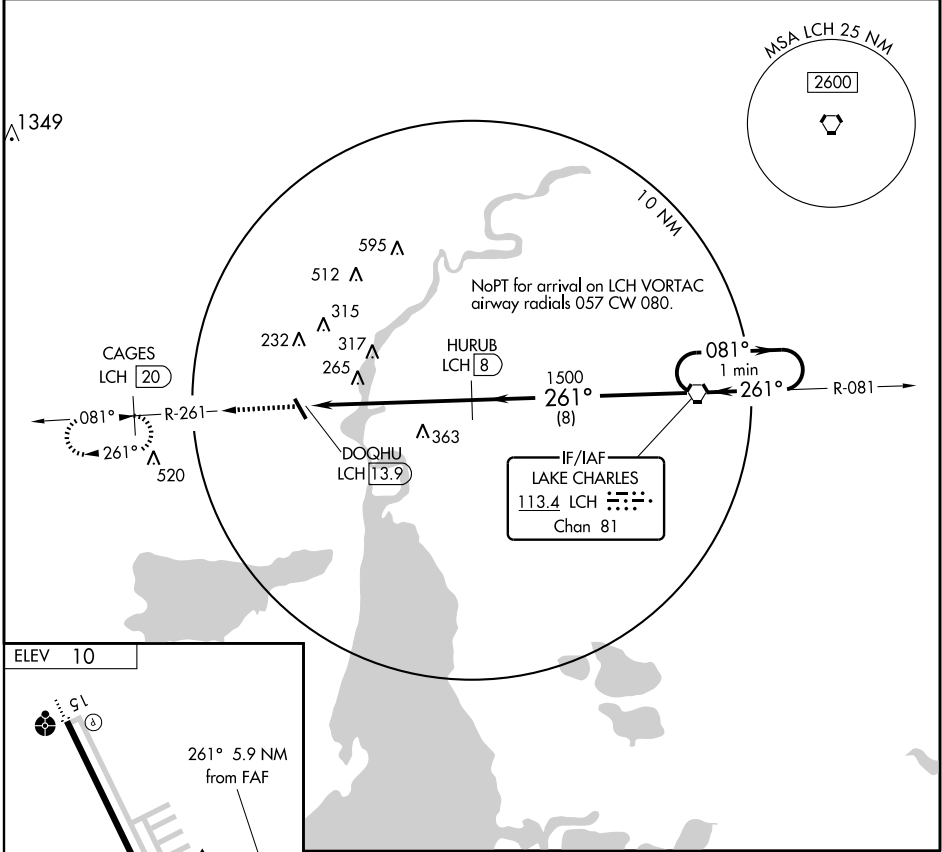
VORTAC LCH 113.4 Chan 81	APP CRS 261°	Rwy Idg TDZE Apt Elev	N/A N/A 10
--	------------------------	-----------------------------	---------------------------------------

VOR/DME-A
SULPHUR/ SOUTHLAND FIELD (U.X.L)

⚠ When local altimeter setting not received, use Lake Charles Rgnl altimeter setting and increase all MDA 20 feet and circling Cais C and D visibility ¼ mile.

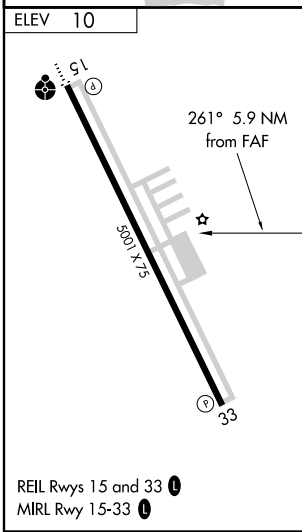
MISSED APPROACH: Climb to 1600 via LCH R-261 to CAGES/20 DME and hold.

AWOS-3 118.175	LAKE CHARLES APP CON * 119.35 282.3	UNICOM 122.8 (CTAF) 0
--------------------------	---	--



SC-4, 22 OCT 2009 to 19 NOV 2009

SC-4, 22 OCT 2009 to 19 NOV 2009



1600 LCH R-261	CAGES LCH [20]	One Minute Holding Pattern	
DOGHU LCH [13.9]	HURUB LCH [8]	VORTAC	081° → 1700 ← 261°
5.9 NM		8 NM	
CATEGORY	A	B	C
CIRCLING	680-1	670 (700-1)	680-1¾ 670 (700-1¾)
			680-2 670 (700-2)

SULPHUR, LOUISIANA
Amdt 2 09071

30° 08' N-93° 23' W

SULPHUR/ SOUTHLAND FIELD (U.X.L)
VOR/DME-A