

NDB or GPS RWY 1

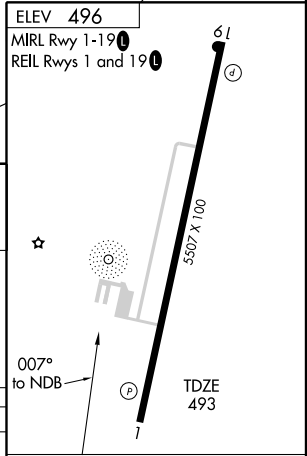
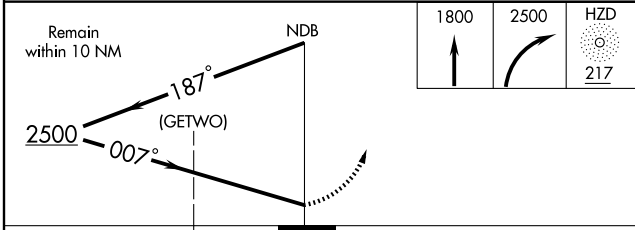
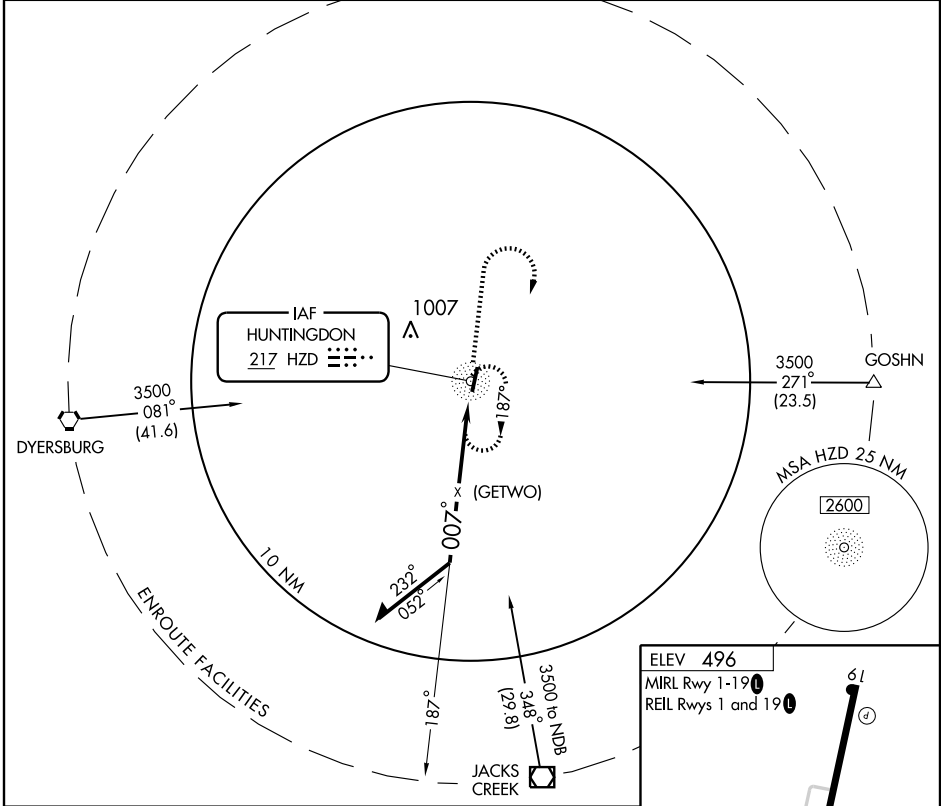
HUNTINGDON/CARROLL COUNTY (HZD)

NDB HZD 217	APP CRS 007°	Rwy Idg 5507
		TDZE 493
		Apt Elev 496

NA If local altimeter setting not received, use Jackson altimeter setting and increase all MDA's 100 feet.

MISSED APPROACH: Climb to 1800 then climbing right turn to 2500 direct HZD NDB and hold.

AWOS-3 133.275	MEMPHIS CENTER 134.65 316.15	UNICOM 122.8 (CTAF)
--------------------------	--	-------------------------------



CATEGORY	A	B	C	D
S-1	1200-1 707 (800-1)		1200-2 707 (800-2)	1200-2 707 (800-2) 1200-2 707 (800-2) 1/4
CIRCLING	1200-1 704 (800-1)		1200-2 704 (800-2)	1200-2 704 (800-2) 1/4

Knots	60	90	120	150	180
Min:Sec					

NDB or GPS RWY 1

SE-1, 22 OCT 2009 to 19 NOV 2009

SE-1, 22 OCT 2009 to 19 NOV 2009