

HUNTINGDON, TENNESSEE

AL-6931 (FAA)

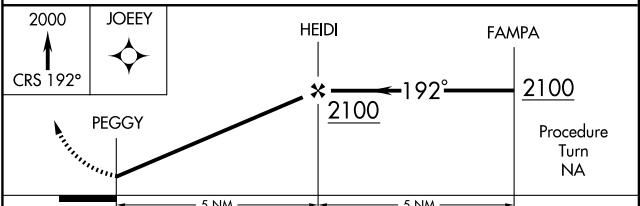
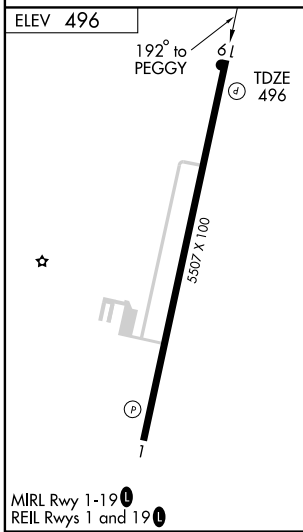
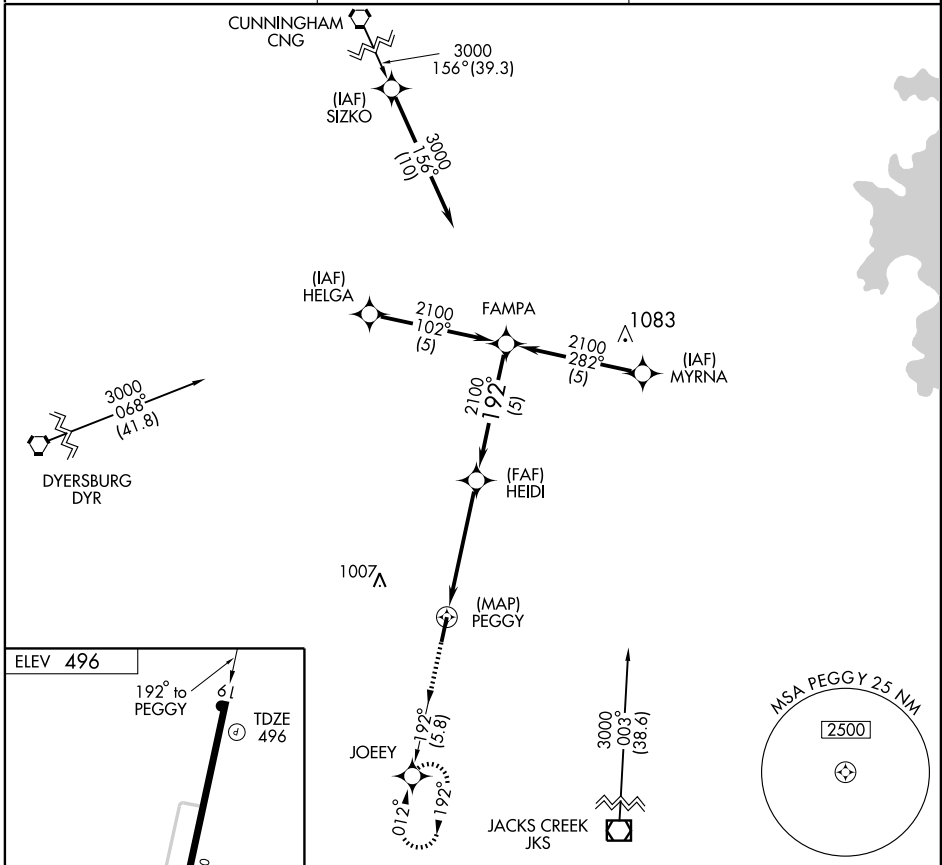
GPS RWY 19

HUNTINGDON/CARROLL COUNTY (HZD)

APP CRS 192°	Rwy Idg 5507
	TDZE 496
	Apt Elev 496

▽ If local altimeter setting not received, use Jackson, TN altimeter setting and increase all MDAs 100 feet.
△NA MISSED APPROACH: Climb to 2000 via 192° course to JOEY WP and hold.

AWOS-3 133.275	MEMPHIS CENTER 134.65 316.15	UNICOM 122.8 (CTAF) 0
--------------------------	--	---------------------------------



CATEGORY	A	B	C	D
S-19	1000-1	504 (600-1)	1000-1½	504 (600-1½)
CIRCLING	1000-1	504 (600-1)	1000-1½	1060-2
			504 (600-1½)	564 (600-2)

HUNTINGDON, TENNESSEE
 Orig 08269

36°05'N - 88°28'W

HUNTINGDON/CARROLL COUNTY (HZD)

GPS RWY 19

SE-1, 22 OCT 2009 to 19 NOV 2009

SE-1, 22 OCT 2009 to 19 NOV 2009