

WESLACO, TEXAS

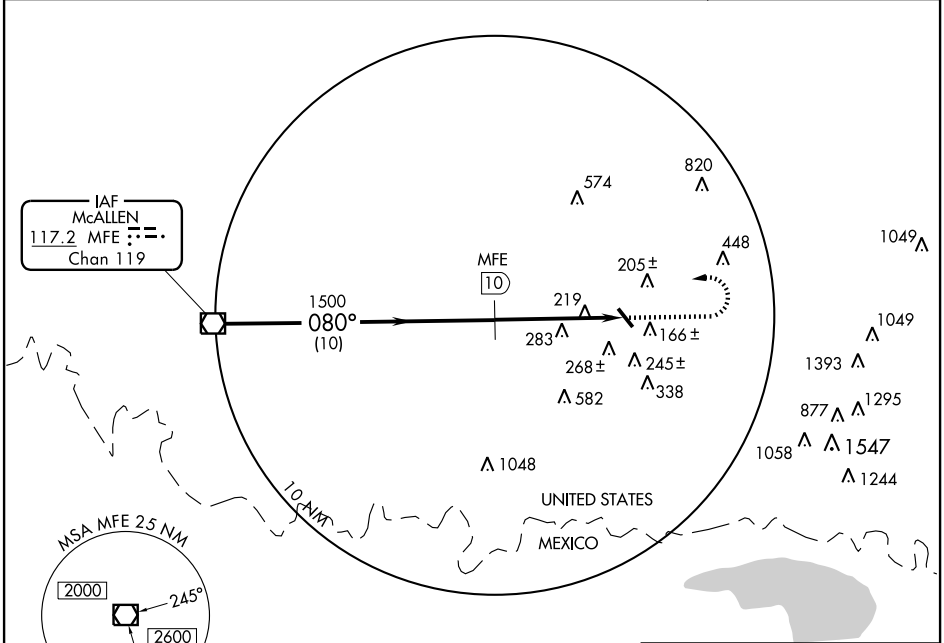
AL-6930 (FAA)

VOR/DME MFE 117.2 Chan 119	APP CRS 080°	Rwy Idg TDZE Apt Elev N/A N/A 70
--	------------------------	--

VOR/DME-A
WESLACO/MID VALLEY (T65)

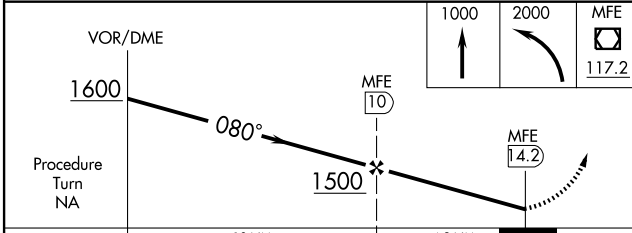
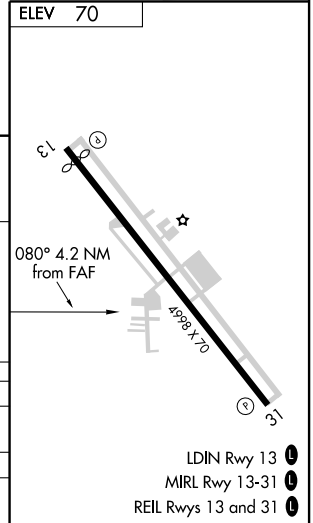
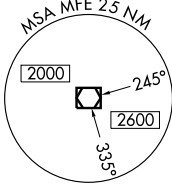
▲ NA Obtain local altimeter setting on CTAF; when not received, use McAllen Miller Intl altimeter setting. MISSED APPROACH: Climb to 1000, then climbing left turn to 2000 direct MFE VOR/DME.

AWOS-3 118.575	VALLEY APP CON 121.0 284.7	CLNC DEL 125.95	UNICOM 122.8 (CTAF) 0
--------------------------	--------------------------------------	---------------------------	---------------------------------



SC-3, 22 OCT 2009 to 19 NOV 2009

SC-3, 22 OCT 2009 to 19 NOV 2009



CATEGORY	A	B	C	D
CIRCLING	620-1	550 (600-1)	620-1½ 550 (600-1½)	NA
MC ALLEN MILLER INTL ALTIMETER SETTING MINIMUMS				
CIRCLING	660-1	590 (600-1)	660-1½ 590 (600-1½)	NA

WESLACO, TEXAS
Orig 09295

26° 11'N-97° 58'W

WESLACO/MID VALLEY (T65)
VOR/DME-A