

GPS RWY 13

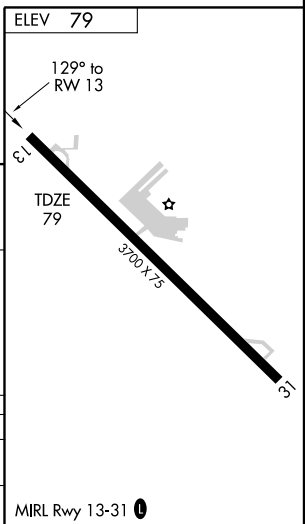
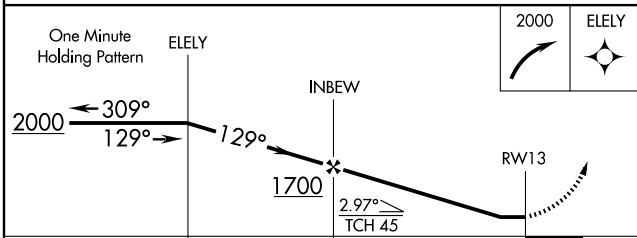
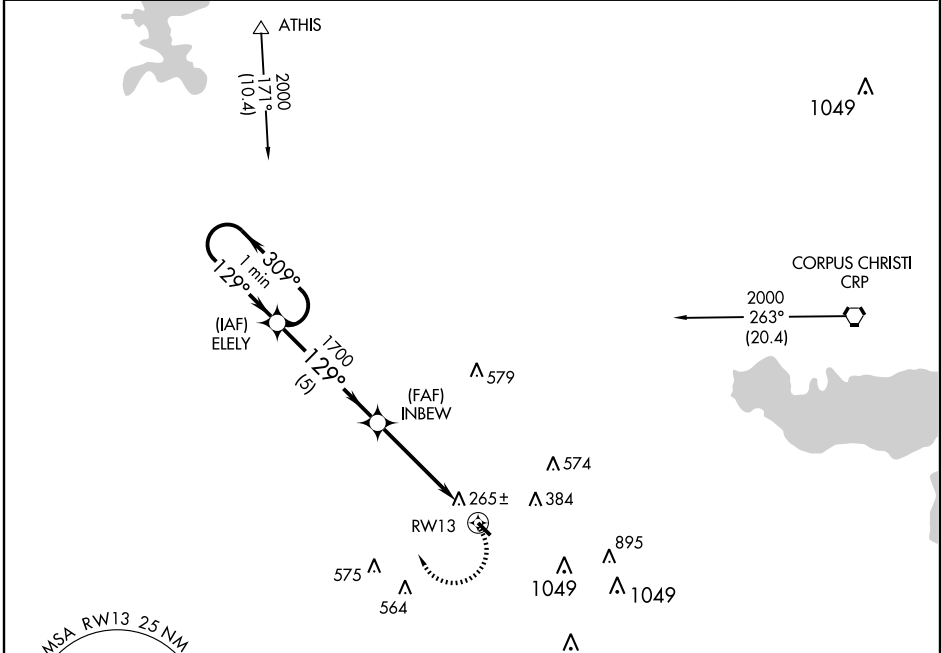
ROBSTOWN/NUECES COUNTY (R.B.O)

APP CRS 129°	Rwy Idg 3700
	TDZE 79
	Apt Elev 79

▽ Use Corpus Christi altimeter setting.
△ NA Circling not authorized northeast of Rwy 13-31.

MISSED APPROACH: Climbing right turn to 2000 direct ELEY and hold.

AWOS-3 118.175	KINGSVILLE APP CON * 119.9 290.45	CTAF 122.9	122.8 0
--------------------------	---	----------------------	----------------



CATEGORY	A	B	C	D
S-13	600-1	521 (600-1)	600-1½ 521 (600-1½)	NA
CIRCLING	660-1	581 (600-1)	660-1½ 581 (600-1½)	NA

GPS RWY 13

SC-3, 22 OCT 2009 to 19 NOV 2009

SC-3, 22 OCT 2009 to 19 NOV 2009