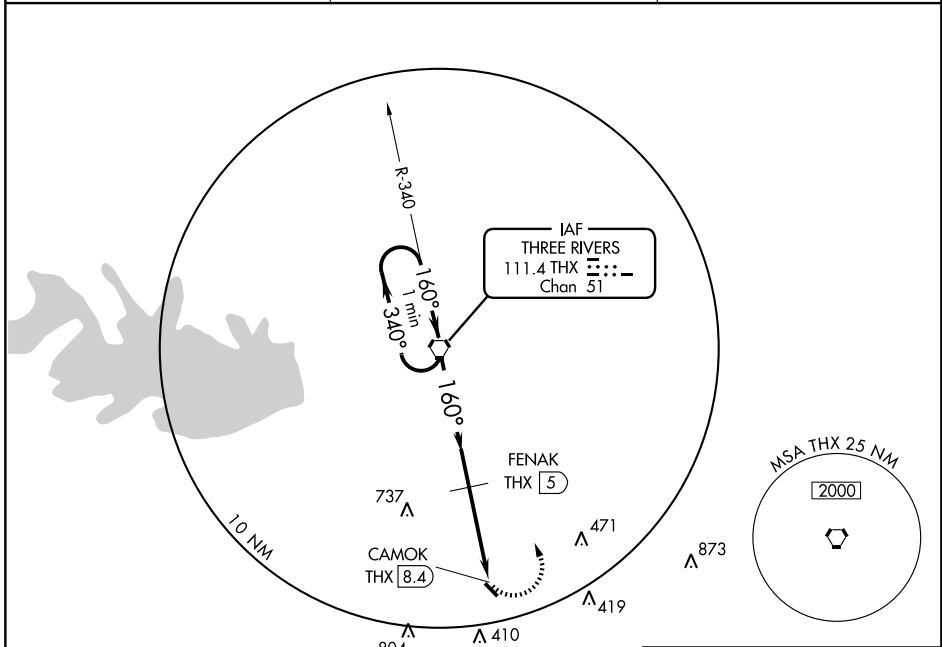


VORTAC THX 111.4 Chan 51	APP CRS 160°	Rwy Idg TDZE Apt Elev N/A N/A 129
--	------------------------	---

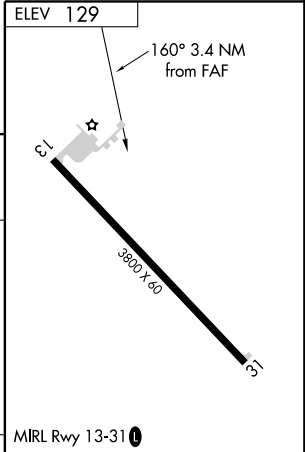
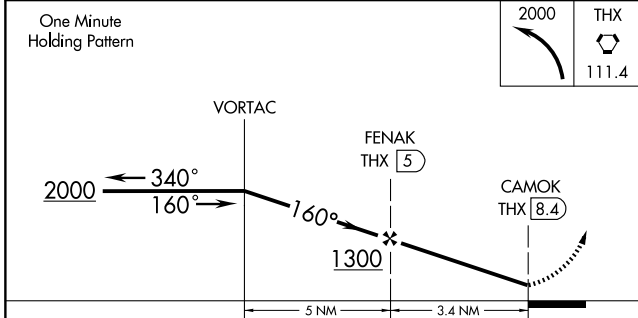
VOR/DME-A
GEORGE WEST/LIVE OAK COUNTY (8T6)

<p>▽ NA Use Alice Intl altimeter setting.</p>	<p>MISSED APPROACH: Climbing left turn to 2000 direct THX VORTAC and hold.</p>
--	--

<p>HOUSTON CENTER 134.6 322.5</p>	<p>CATF 122.9</p>	<p>122.7 0</p>
--	------------------------------	------------------------------



NoPT for arrivals on THX airway radials 319 clockwise 337.



CATEGORY	A	B	C	D	FAF to MAP 3.4 NM					
CIRCLING	760-1 631 (700-1)		760-1¾ 631 (700-1¾)	NA	Knots	60	90	120	150	180
					Min:Sec	3:24	2:16	1:42	1:22	1:08

SC-3, 22 OCT 2009 to 19 NOV 2009

SC-3, 22 OCT 2009 to 19 NOV 2009