

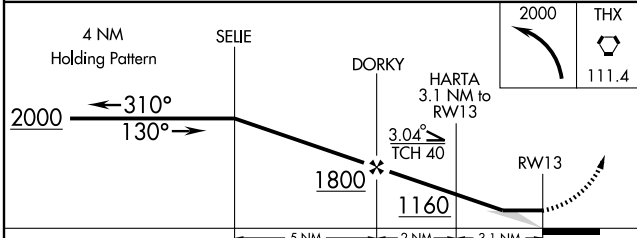
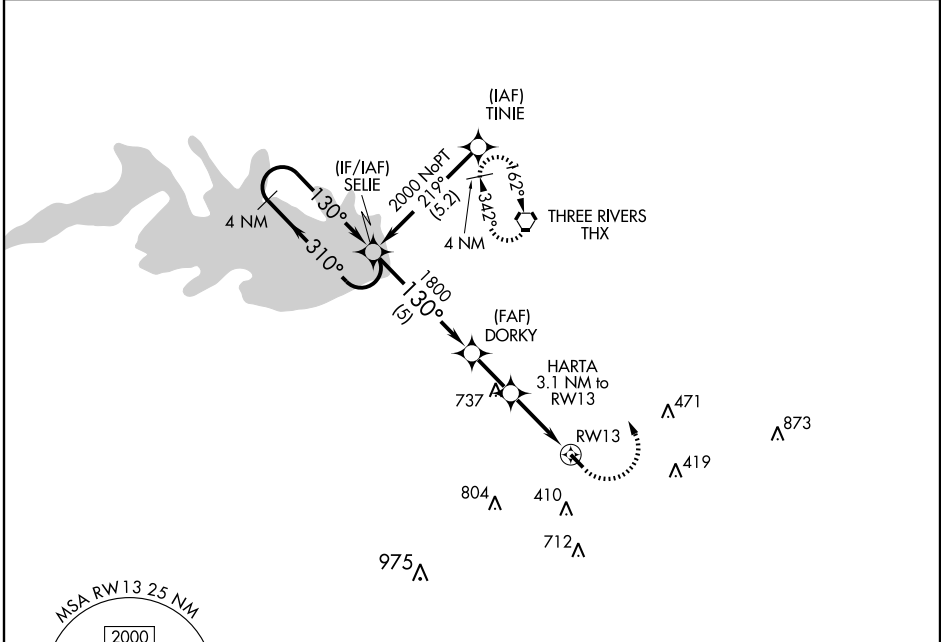
# RNAV (GPS) RWY 13

GEORGE WEST/LIVE OAK COUNTY (8T6)

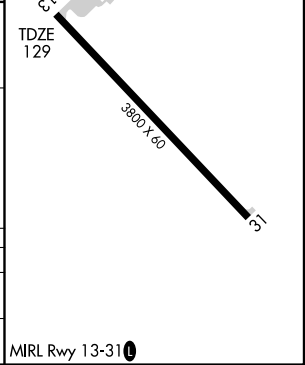
APP CRS <b>130°</b>	Rwy Idg <b>3800</b>
	TDZE <b>129</b>
	Apt Elev <b>129</b>

Use Alice Intl altimeter setting. GPS or RNP-0.3 required.
  MISSED APPROACH: Climbing left turn to 2000 direct THX VORTAC and hold.

HOUSTON CENTER <b>134.6 322.5</b>	CTAf <b>122.9</b>	<b>122.7</b>
--------------------------------------	----------------------	--------------



CATEGORY	A	B	C	D
RNAV MDA	700-1	571 (600-1)	700-1½ 571 (600-1½)	NA
CIRCLING	760-1	631 (700-1)	760-1¾ 631 (700-1¾)	NA



SC-3, 22 OCT 2009 to 19 NOV 2009

SC-3, 22 OCT 2009 to 19 NOV 2009