

SHAFTER, CALIFORNIA

AL-6926 (FAA)

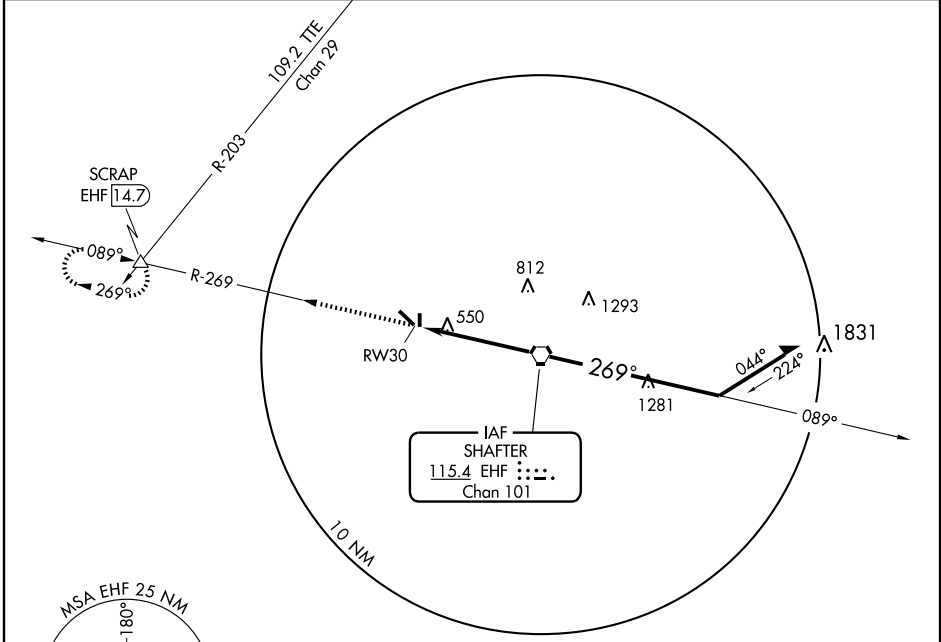
VOR or GPS RWY 30

SHAFTER-MINTER FIELD (MIT)

VORTAC EHF 115.4 Chan 101	APP CRS 269°	Rwy Idg TDZE Apt Elev	4501 412 422
--	------------------------	-----------------------------	---

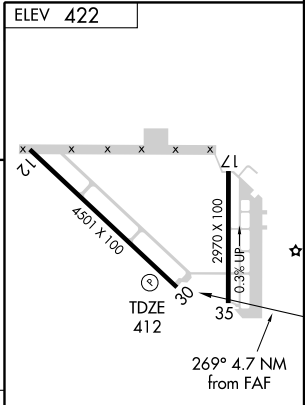
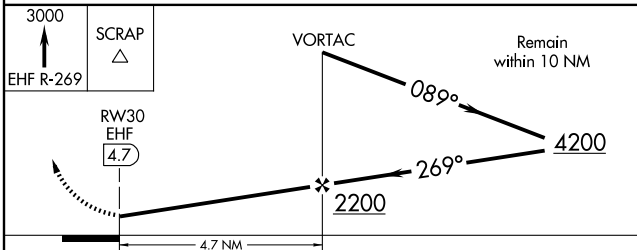
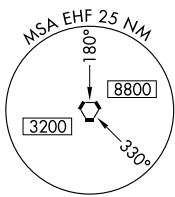
NA Use Bakersfield, CA altimeter setting. MISSED APPROACH: Climb to 3000 via EHF R-269 to SCRAP INT/EHF 14.7 DME and hold.

BAKERSFIELD APP CON **126.45 270.3** CTAF **122.9**



SW-3, 22 OCT 2009 to 19 NOV 2009

SW-3, 22 OCT 2009 to 19 NOV 2009



CATEGORY	A	B	C	D
S-30	860-1	448 (500-1)	860-1½ 448 (500-1½)	NA
CIRCLING	860-1 438 (500-1)	880-1 458 (500-1)	880-1½ 458 (500-1½)	NA

FAF to MAP 4.7 NM

Knots	60	90	120	150	180
Min:Sec	4:42	3:08	2:21	1:53	1:34

SHAFTER, CALIFORNIA
Orig 09239

35° 30'N-119° 12'W

VOR or GPS RWY 30