

STAMFORD, TEXAS

AL-6925 (FAA)

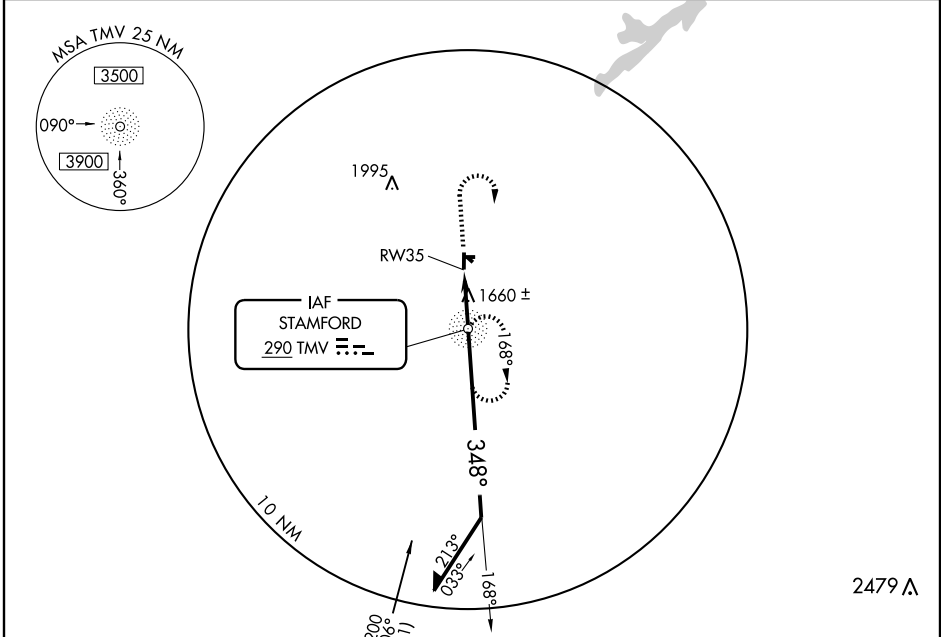
NDB or GPS RWY 35

STAMFORD/ARLEDGE FIELD (F56)

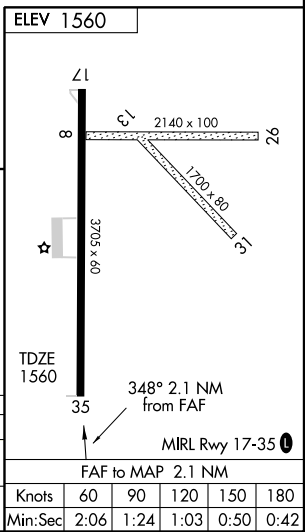
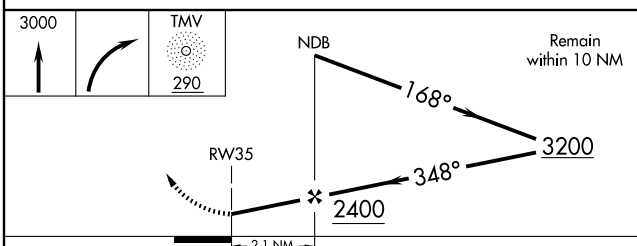
NDB TMV 290	APP CRS 348°	Rwy Idg 3705
		TDZE 1560
		Apt Elev 1560

▲ NA Use Abilene altimeter setting. MISSED APPROACH: Climb straight ahead to 3000, then right turn direct TMV NDB and hold.

ABILENE APP CON **127.2 282.3** UNICOM **122.8 (CTAF) 0**



ABILENE
113.7 ABI
Chan 84



CATEGORY	A	B	C	D
S-35	2100-1	540 (600-1)	2100-1½ 540 (600-1½)	NA
CIRCLING	2100-1	540 (600-1)	2100-1½ 540 (600-1½)	NA

STAMFORD, TEXAS
Orig 04050

32° 55' N-99° 44' W

STAMFORD/ARLEDGE FIELD (F56)

NDB or GPS RWY 35

SC-2, 22 OCT 2009 to 19 NOV 2009

SC-2, 22 OCT 2009 to 19 NOV 2009