

TIPTON, IOWA

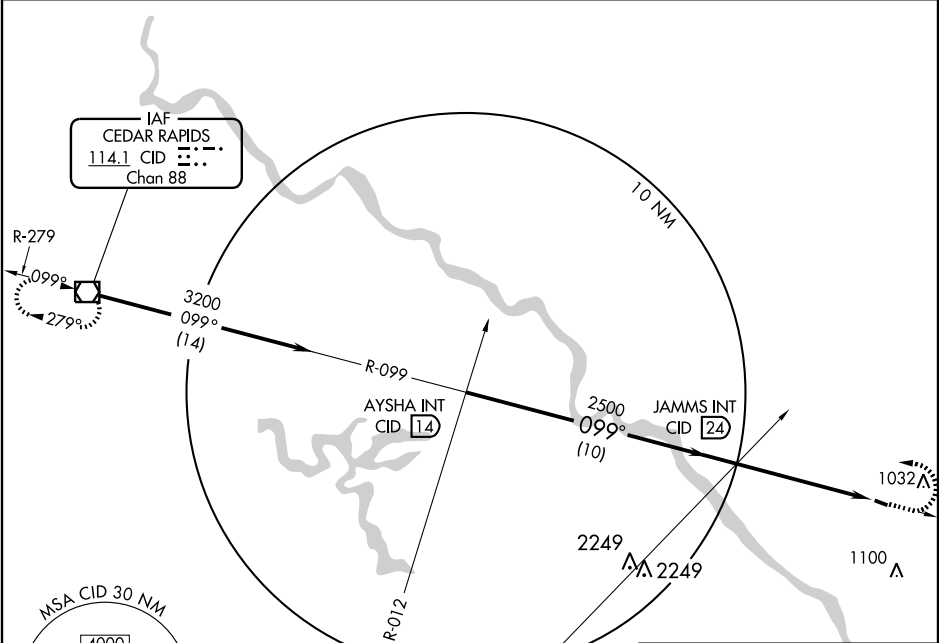
AL-6924 (FAA)

VOR/DME CID <b>114.1</b> Chan <b>88</b>	APP CRS <b>099°</b>	Rwy Idg <b>3000</b> TDZE <b>840</b> Apt Elev <b>840</b>
---	------------------------	---

# VOR RWY 11

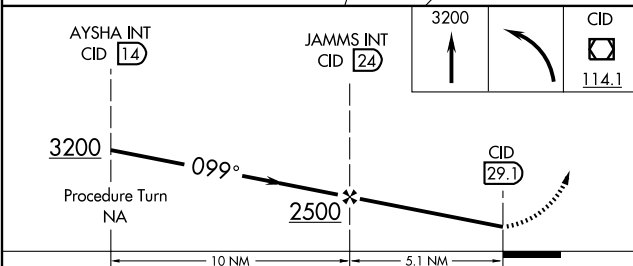
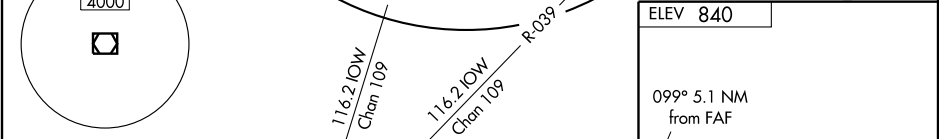
TIPTON/MATHEWS MEMORIAL (8C4)

<p>▼ Use Cedar Rapids altimeter setting.</p> <p>▲ NA</p>	<p>MISSED APPROACH: Climb to 3200, then left turn direct CID VOR/DME and hold.</p>
<p>CEDAR RAPIDS APP CON ★</p> <p><b>119.7 266.8</b></p>	<p>CTAF</p> <p><b>122.9</b></p>



NC-3, 22 OCT 2009 to 19 NOV 2009

NC-3, 22 OCT 2009 to 19 NOV 2009



	10 NM		5.1 NM	
CATEGORY	A	B	C	D
S-11	1300-1 460 (500-1)	1300-1¼ 460 (500-1¼)	NA	
CIRCLING	1440-1 600 (600-1)	1460-1¼ 620 (700-1¼)	NA	

MIRL Rwy 11-29					
FAF to MAP 5.1 NM					
Knots	60	90	120	150	180
Min:Sec	5:06	3:24	2:33	2:02	1:42

TIPTON, IOWA  
Amdt 2 06047

41°46'N-91°09'W

TIPTON/MATHEWS MEMORIAL (8C4)  
**VOR RWY 11**