

MINDEN, NEBRASKA

AL-6921 (FAA)

RNAV (GPS) RWY 34

MINDEN/ PIONEER VILLAGE FIELD (ØV3)

APP CRS	Rwy Idg	3900
339°	TDZE	2160
	Apt Elev	2160

▽ DME/DME RNP-0.3 NA. Visibility reduction by helicopters NA. Use Kearney altimeter setting; when not received, use Holdrege altimeter setting and increase all MDA 40 feet.

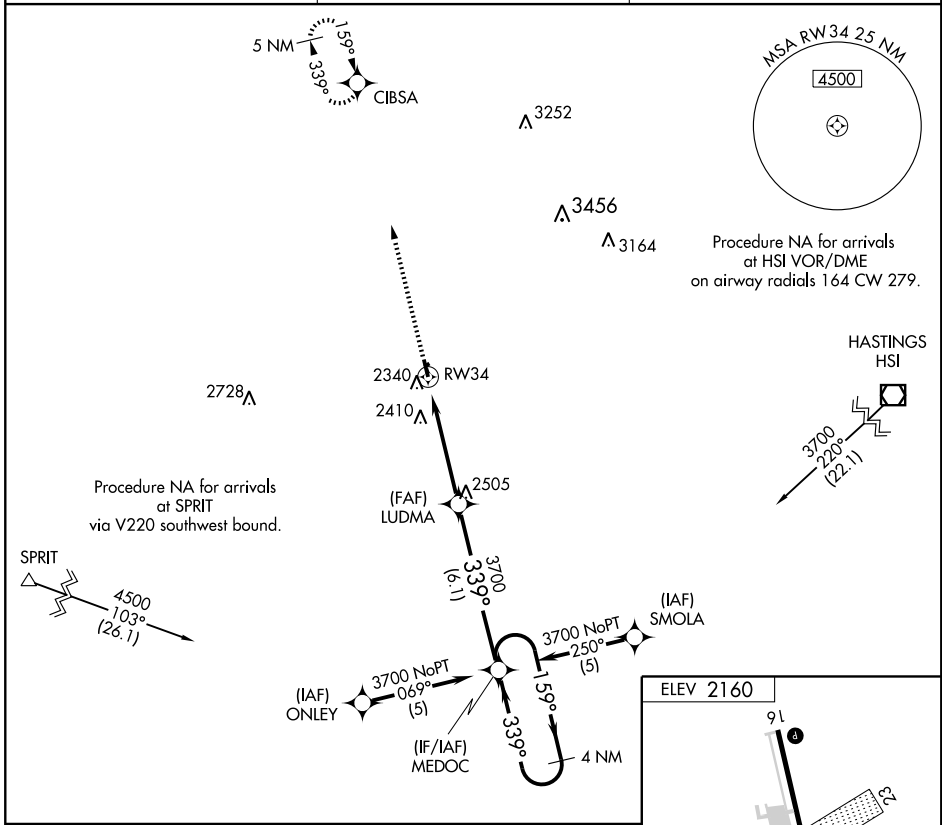
▲ NA

MISSED APPROACH: Climb to 4300 direct CIBSA and hold.

KEARNEY AWOS-3
123.875

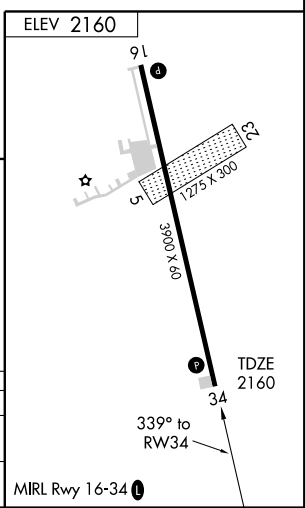
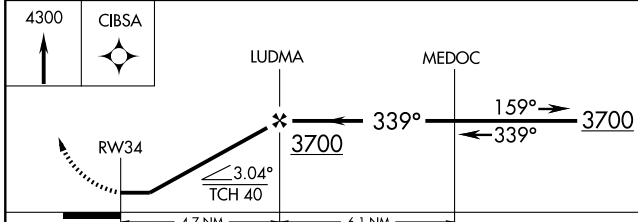
MINNEAPOLIS CENTER
119.4 278.8

UNICOM
122.7 (CTAF) 0



NC-2, 22 OCT 2009 to 19 NOV 2009

NC-2, 22 OCT 2009 to 19 NOV 2009



CATEGORY	A	B	C	D
LNAV MDA	2700-1	540 (600-1)		NA
CIRCLING	2700-1	540 (600-1)		NA

MINDEN, NEBRASKA
Orig 09239

40°31'N-98°57'W

MINDEN/ PIONEER VILLAGE FIELD (ØV3)

RNAV (GPS) RWY 34