

MINDEN, NEBRASKA

AL-6921 (FAA)

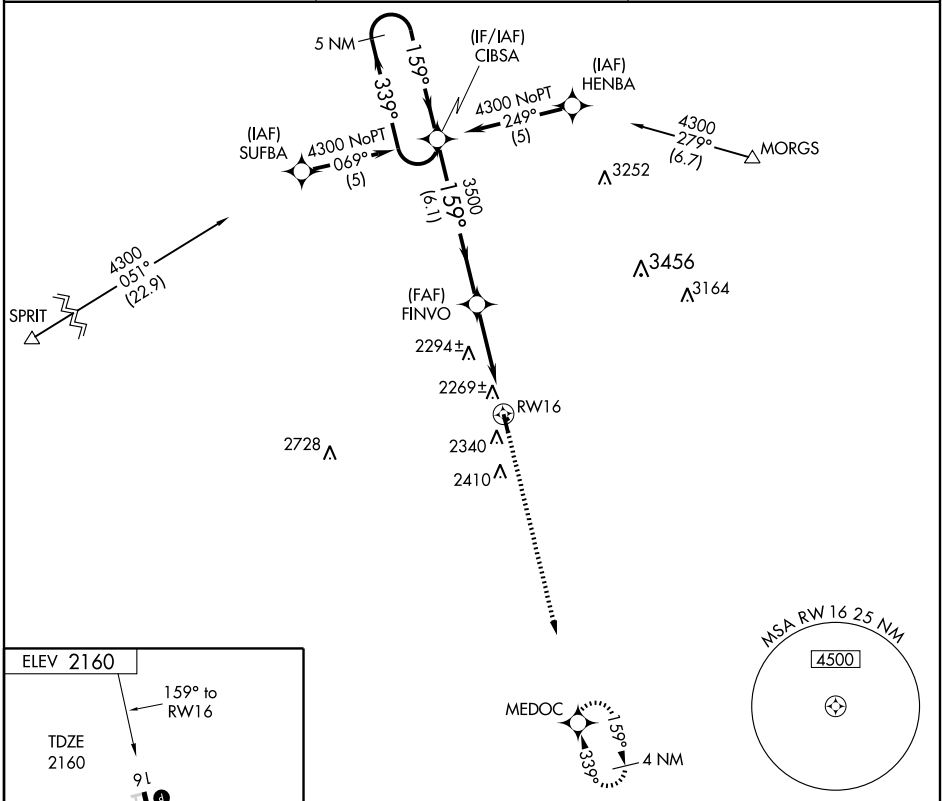
WAAS Ch 53714 W16A	APP CRS 159°	Rwy Idg TDZE Apt Elev	3900 2160 2160
--	------------------------	-----------------------------	---

RNAV (GPS) RWY 16

MINDEN/PIONEER VILLAGE FIELD (ØV3)

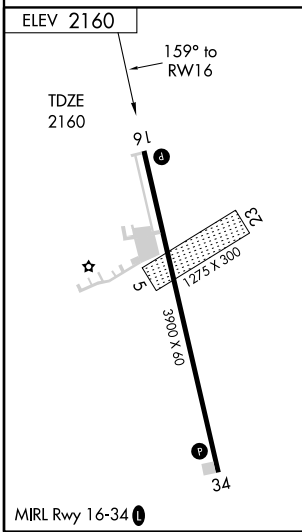
Baro-VNAV NA. DME/DME RNP-0.3 NA. Visibility reduction by helicopters NA.
 Use Kearney altimeter setting; when not received, use Holdrege altimeter setting and increase all DA 29 feet and all MDA 40 feet, increase LPV all cats visibility ¼ mile.
 MISSED APPROACH: Climb to 3700 direct MEDOC and hold.

KEARNEY AWOS-3 123.875	MINNEAPOLIS CENTER 119.4 278.8	UNICOM 122.7 (CTAF) Ø
----------------------------------	--	---------------------------------



NC-2, 22 OCT 2009 to 19 NOV 2009

NC-2, 22 OCT 2009 to 19 NOV 2009



5 NM Holding Pattern		CIBSA	3700	MEDOC
4300		← 339°	↑	✧
GS 3.00°		159° →		
TCH 40		3500		
		6.1 NM	4.1 NM	
CATEGORY	A	B	C	D
LPV DA	2445-1	285 (300-1)		NA
LNAV/VNAV DA	2574-1½	414 (500-1½)		NA
LNAV MDA	2580-1	420 (500-1)		NA
CIRCLING	2680-1	520 (600-1)		NA

MINDEN, NEBRASKA
Orig 09239

40°31'N-98°57'W

RNAV (GPS) RWY 16