

VOR/DME ETL 110.2 Chan 39	APP CRS 095°	Rwy Idg TDZE Apt Elev 9078	N/A N/A 9078
-----------------------------------------------	------------------------	--------------------------------------------	-----------------------------------------

VOR/DME or GPS-A

TELLURIDE RGNL (TEX)

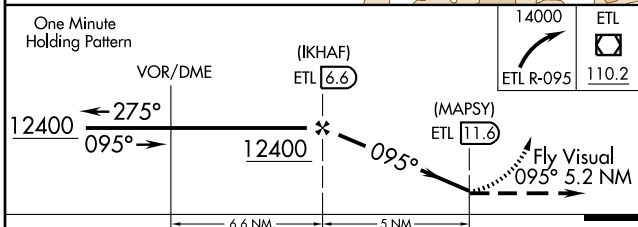
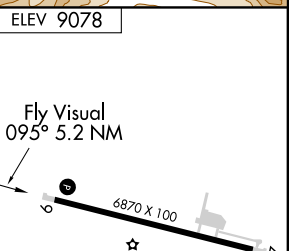
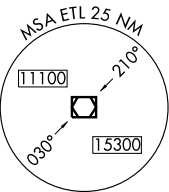
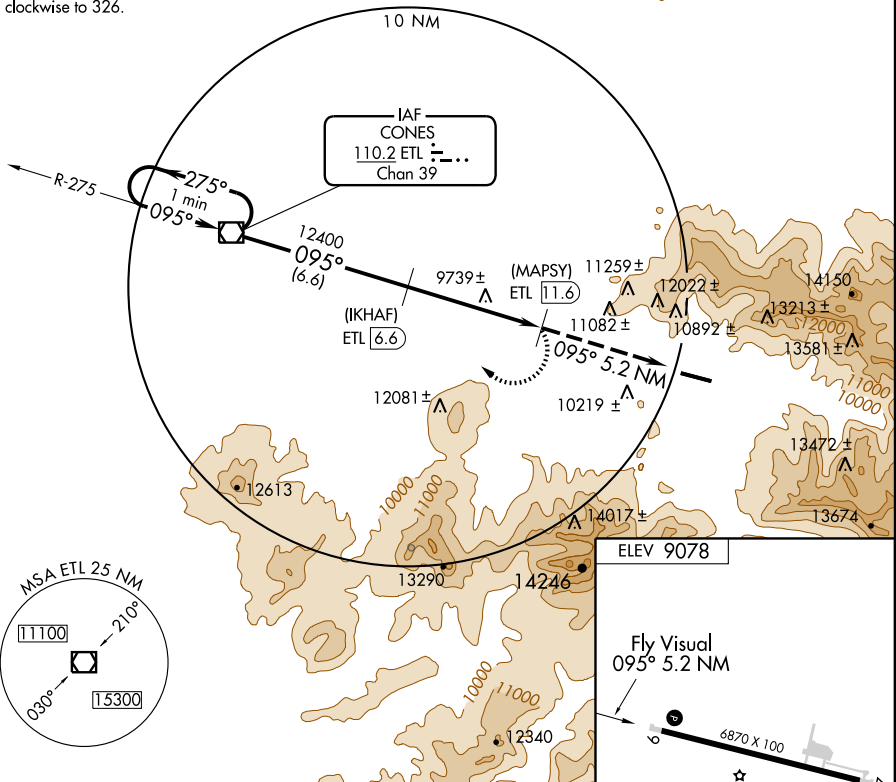
▽ Obtain local altimeter setting on CTAF; if not received procedure not authorized. Procedure not authorized at night. Circling not authorized north of runway 9-27.

△ NA

MISSED APPROACH: Immediate climbing right turn to 14,000 via ETL R-095 to ETL VOR/DME and hold.

AWOS-3 118.325	DENVER CENTER 125.35 354.05	UNICOM 123.0 (CTAF) 0
--------------------------	---------------------------------------	---------------------------------

NoPt for arrivals on ETL VOR/DME radials 235 clockwise to 326.



14000	ETL
ETL R-095	110.2

REIL Rwys 9 and 27 0
MRL Rwys 9-27 0

CATEGORY	A	B	C	D	Knots	60	90	120	150	180
CIRCLING	12380-6	3294 (3300-6)		NA	Min:Sec					

SW-1, 22 OCT 2009 to 19 NOV 2009

SW-1, 22 OCT 2009 to 19 NOV 2009