

|  |                        |                             |   |
|--|------------------------|-----------------------------|---|
| LOC/DME I-TEX<br><b>109.3</b><br>Chan 30 | APP CRS<br><b>090°</b> | Rwy Idg<br>TDZE<br>Apt Elev | <b>6870</b><br><b>9061</b><br><b>9078</b> |
|--|------------------------|-----------------------------|---|

**LOC/DME RWY 9**  
TELLURIDE RGNL (TEX)

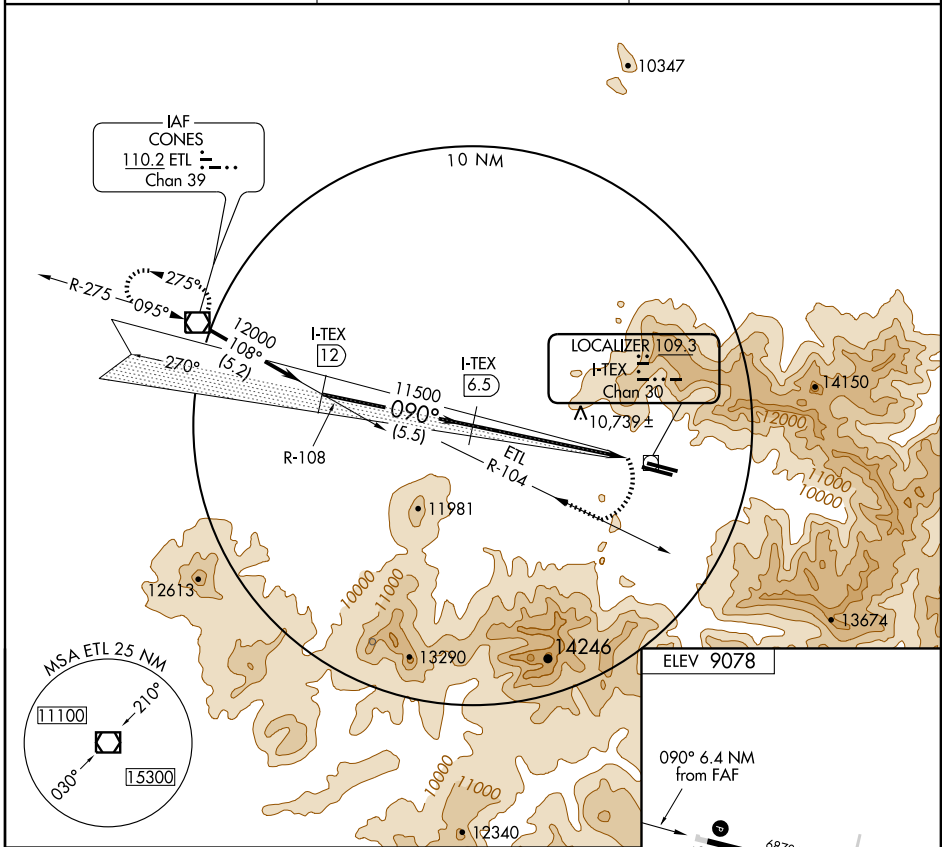
▼ Procedure not authorized at night. Circling not authorized north of runway 9-27. Localizer unusable from 1 DME to threshold.  
▲ NA

MISSED APPROACH: Climbing right turn to 13,000 via ETL VOR/DME R-104 to ETL VOR/DME and hold.

AWOS-3  
**118.325**

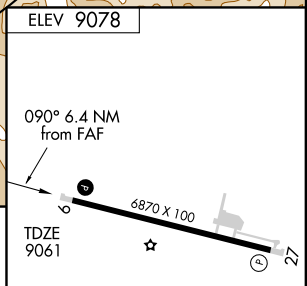
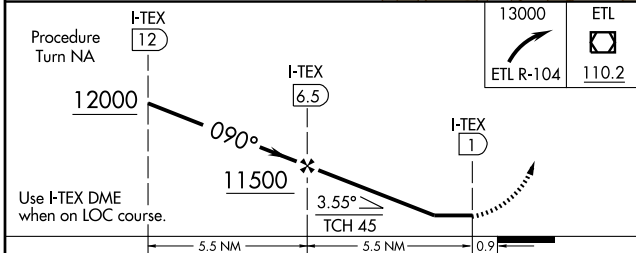
DENVER CENTER  
**125.35 354.05**

UNICOM  
**123.0 (CTAF) 0**



SW-1, 22 OCT 2009 to 19 NOV 2009

SW-1, 22 OCT 2009 to 19 NOV 2009



|           |                                   |               |   |   |           |  |
|-----------|-----------------------------------|---------------|---|---|-----------|--|
| Procedure | Turn NA                           |               |   |   | 13000     | ETL                                    |
|           | Use I-TEX DME when on LOC course. |               |   |   | ETL R-104 | 110.2                                  |
| CATEGORY  | A                                 | B             | C | D |           |  |
| S-9       | 11100-2                           | 2039 (2100-2) |   |   | NA        |  |
| CIRCLING  | 11100-2                           | 2022 (2100-2) |   |   | NA        |  |
|           |                                   |               |   |   |           | REIL Rwy 9 and 27 0<br>MIRL Rwy 9-27 0 |
|           |                                   |               |   |   |           |  |
|           |                                   |               |   |   |           |  |
|           |                                   |               |   |   |           |  |
|           |                                   |               |   |   |           |  |