

TELLURIDE, COLORADO

AL-6920 (FAA)

GPS RWY 9

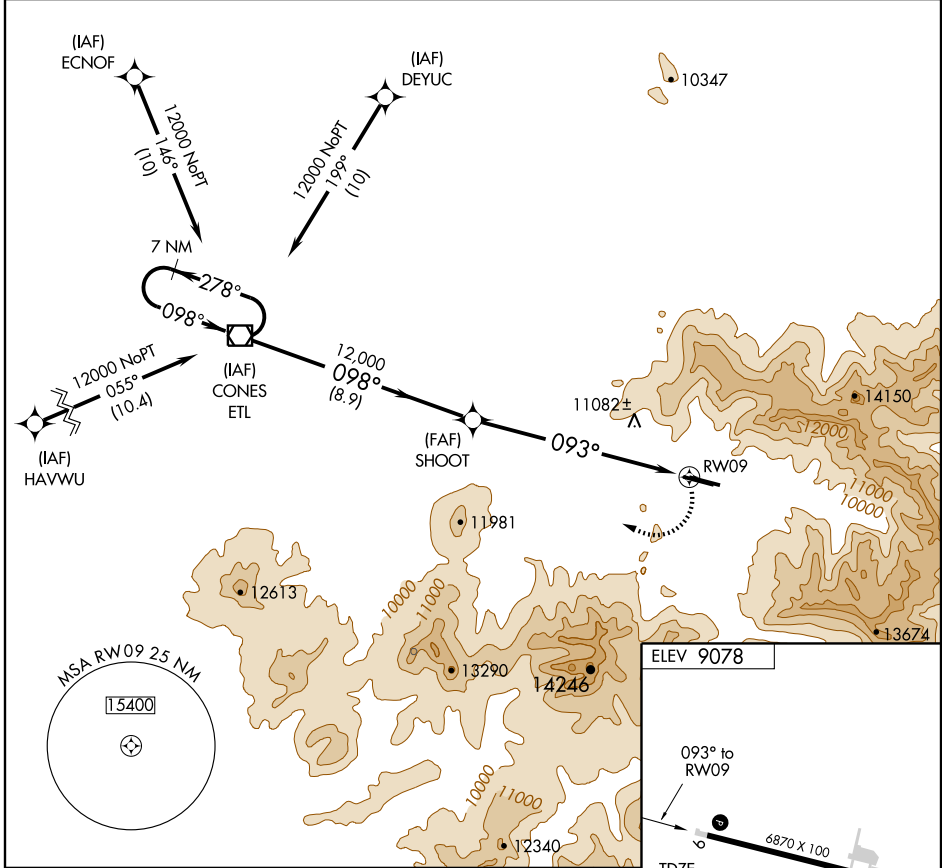
TELLURIDE RGNL (TEX)

APP CRS	Rwy Idg	6870
093°	TDZE	9061
	Apt Elev	9078

▼ Procedure not authorized at night. Circling not authorized north of Rwy 9-27.
 ▲ NA

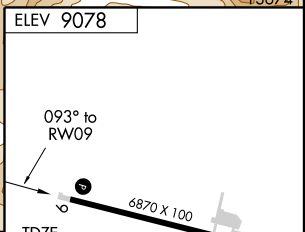
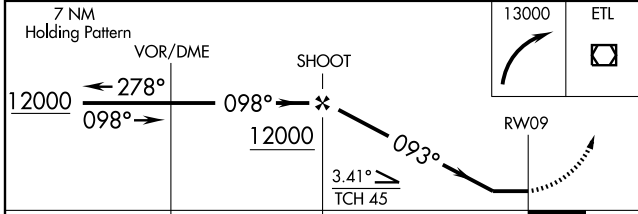
MISSED APPROACH: Climbing right turn to 13,000 direct ETL VOR/DME and hold.

AWOS-3 118.325	DENVER CENTER 125.35 354.05	UNICOM 123.0 (CTAF)
--------------------------	---------------------------------------	-------------------------------



SW-1, 22 OCT 2009 to 19 NOV 2009

SW-1, 22 OCT 2009 to 19 NOV 2009



CATEGORY	A	B	C	D
S-9	11,600-2	2539 (2600-2)		NA
CIRCLING	11,600-2	2522 (2600-2)		NA

REIL Rwy 9 and 27

MIRL Rwy 9-27

TELLURIDE, COLORADO
Amdt 1A 09295

37°57'N -107°55'W

TELLURIDE RGNL (TEX)

GPS RWY 9