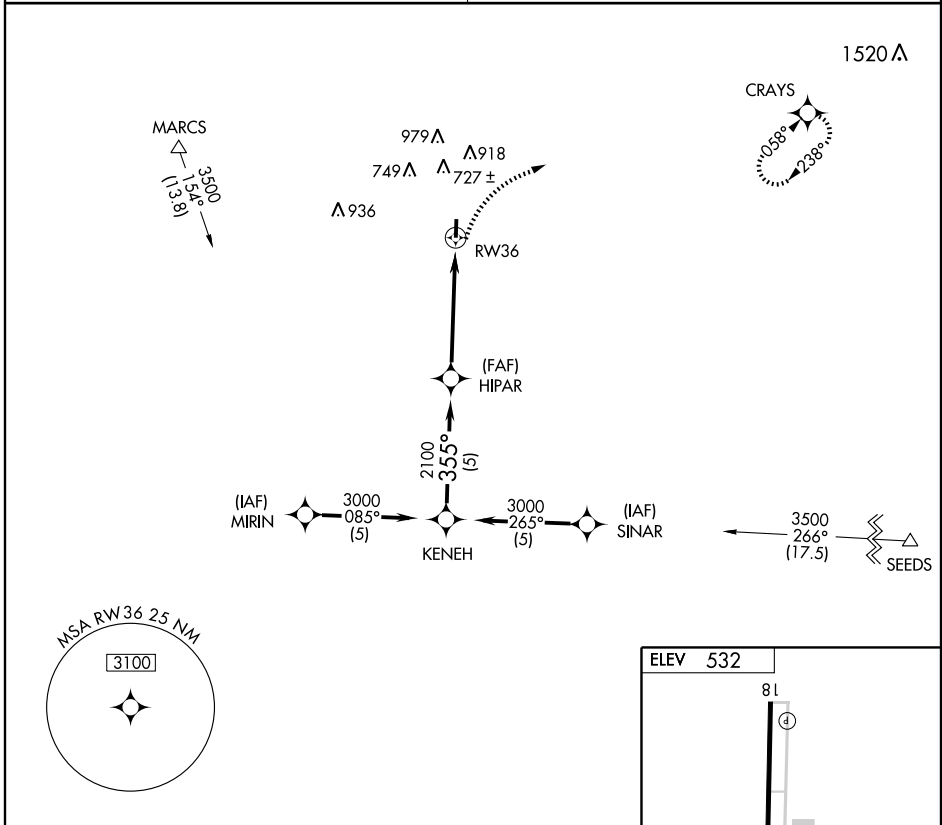


APP CRS 355°	Rwy Idg 4001
	TDZE 530
	Apt Elev 532

NA Use San Marcos Muni altimeter setting. MISSED APPROACH: Climbing right turn to 3000 direct CRAYS WP and hold.

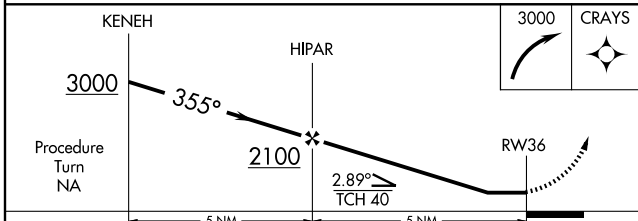
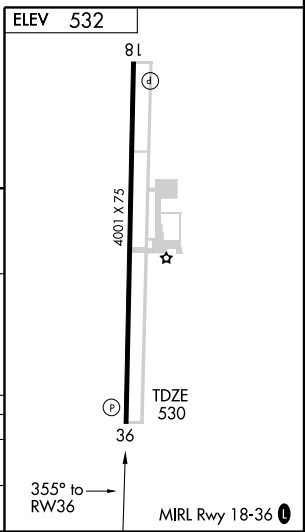
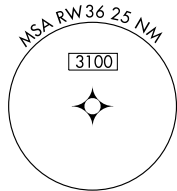
AUSTIN APP CON
127.225 317.65

UNICOM
122.8 (CTAF)



SC-3, 22 OCT 2009 to 19 NOV 2009

SC-3, 22 OCT 2009 to 19 NOV 2009



CATEGORY	A	B	C	D
S-36	1020-1	490 (500-1)	1020-1½ 490 (500-1¼)	NA
CIRCLING	1040-1	508 (600-1)	1060-1½ 528 (600-1½)	NA