

LOCKHART, TEXAS

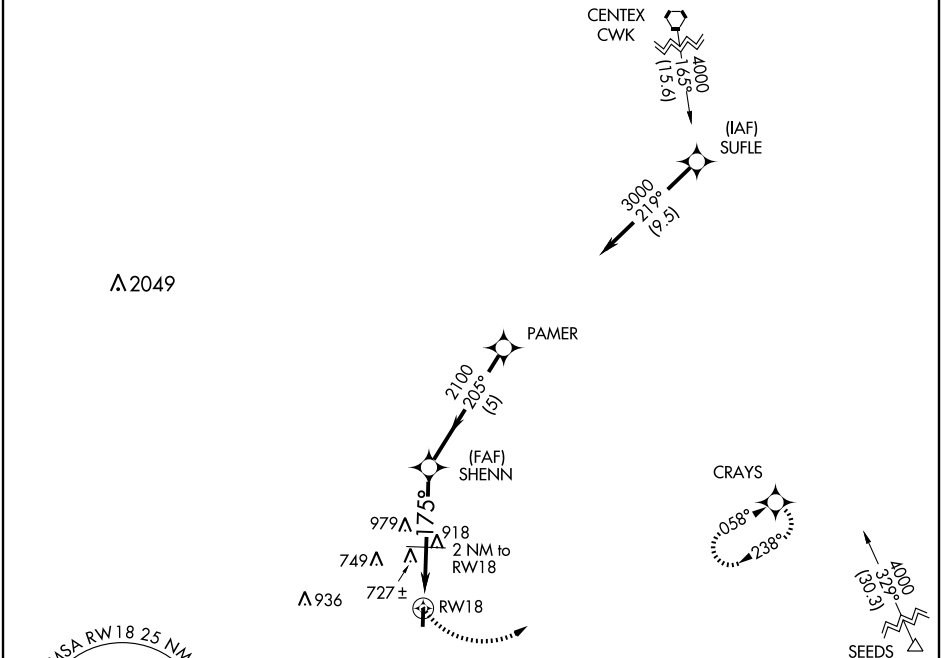
AL-6919 (FAA)

GPS RWY 18
LOCKHART MUNI (50R)

APP CRS 175°	Rwy Idg 4001 TDZE 532 Apt Elev 532
------------------------	---

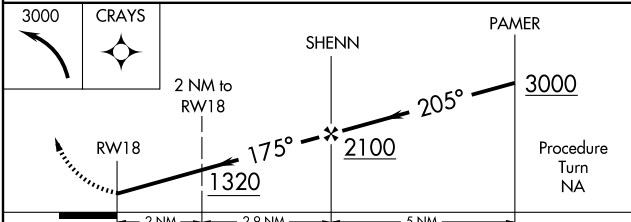
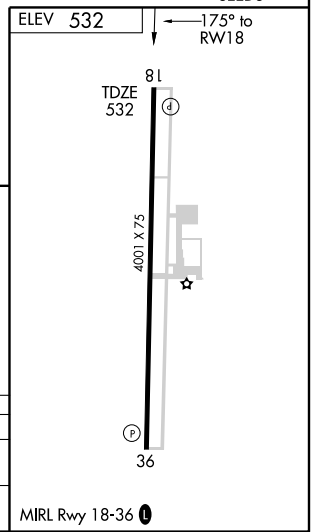
▲ NA Use San Marcos Muni (HYI) altimeter setting. MISSED APPROACH: Climbing left turn to 3000 direct CRAYS and hold.

AUSTIN APP CON **127.225 317.65** UNICOM **122.8 (CTAF) 0**



SC-3, 22 OCT 2009 to 19 NOV 2009

SC-3, 22 OCT 2009 to 19 NOV 2009



CATEGORY	A	B	C	D
S-18	1060-1 528 (600-1)		1060-1½ 528 (600-1½)	NA
CIRCLING	1060-1 528 (600-1)		1060-1½ 528 (600-1½)	NA

LOCKHART, TEXAS
Orig 07130

29° 51' N-97° 40' W

LOCKHART MUNI (50R)
GPS RWY 18

MIRL Rwy 18-36 0