

WYLIE FIVE DEPARTURE

SL-6918 (FAA)

FORT WORTH ALLIANCE (AFW)

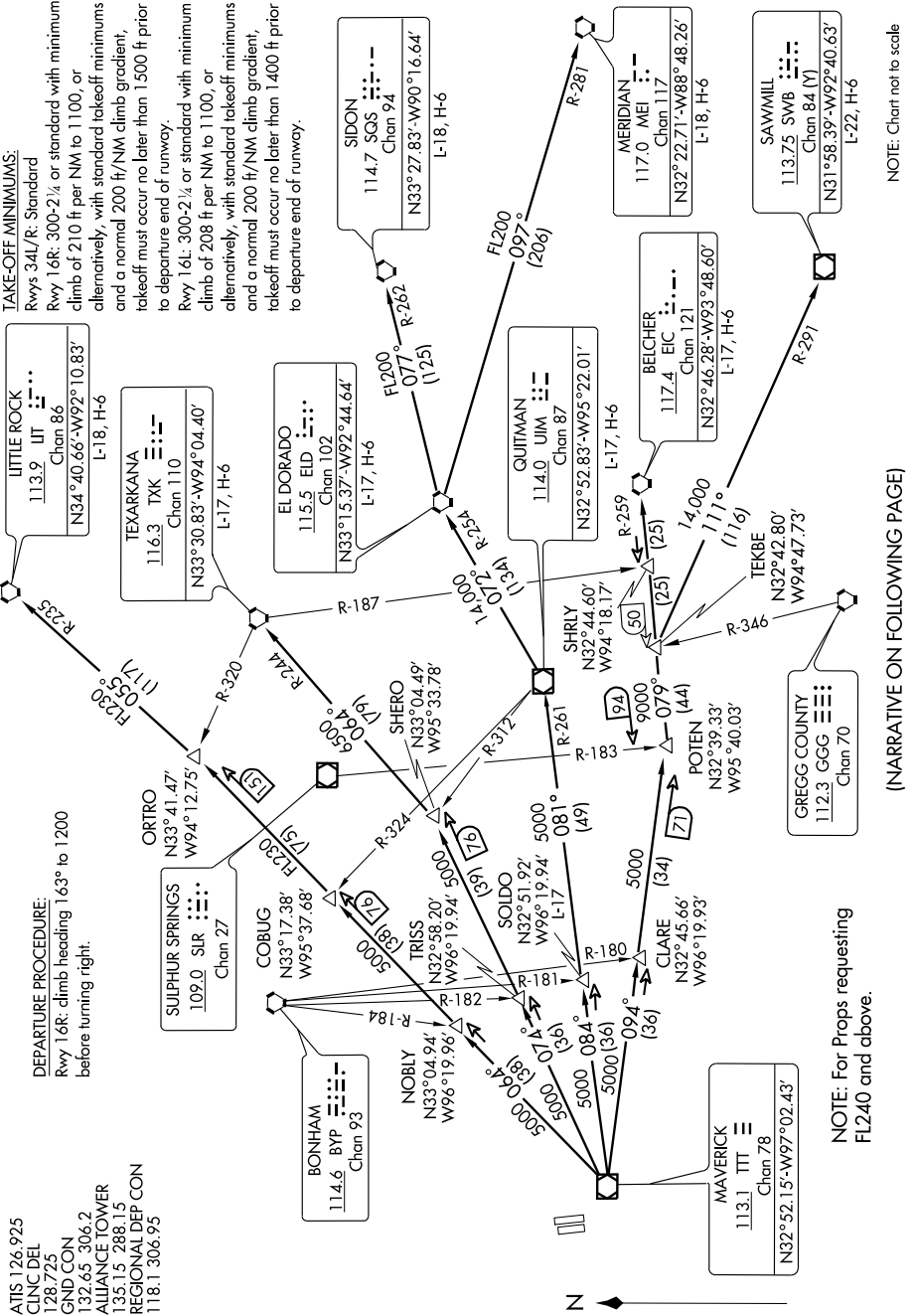
FORT WORTH, TEXAS

SC-2, 22 OCT 2009 to 19 NOV 2009

ATIS 126.925
 CINCL DEL 128.725
 GND CON 132.65, 306.2
 ALLIANCE TOWER 135.15, 288.15
 REGIONAL DEP CON 118.1, 306.95

DEPARTURE PROCEDURE:
 Rwy 16R: climb heading 163° to 1200 before turning right.

TAKE-OFF MINIMUMS:
 Rwys 34L/R: Standard
 Rwy 16R: 300-2¼ or standard with minimum climb of 210 ft per NM to 1100, or alternatively, with standard takeoff minimums and a normal 200 ft/NM climb gradient, takeoff must occur no later than 1500 ft prior to departure end of runway.
 Rwy 16L: 300-2¼ or standard with minimum climb of 208 ft per NM to 1100, or alternatively, with standard takeoff minimums and a normal 200 ft/NM climb gradient, takeoff must occur no later than 1400 ft prior to departure end of runway.



(NARRATIVE ON FOLLOWING PAGE)

SC-2, 22 OCT 2009 to 19 NOV 2009

NOTE: For Props requesting FL240 and above.

NOTE: Chart not to scale