

RNAV (GPS) RWY 34R

FORT WORTH ALLIANCE (AFW)

APP CRS 343°	Rwy Idg 8516 TDZE 681 Apt Elev 722
------------------------	---

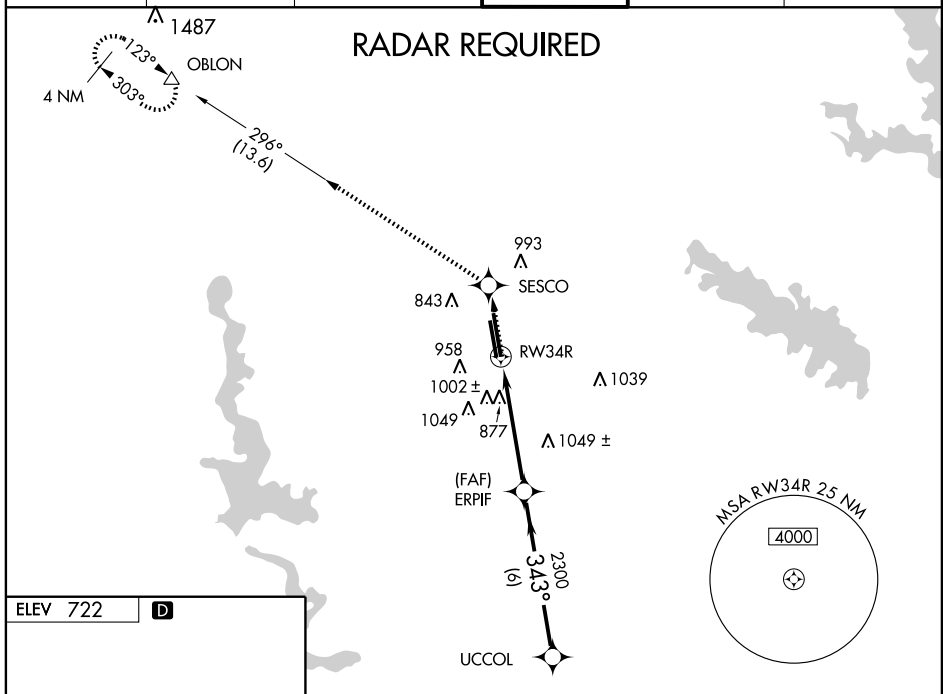
NA GPS or RNP-0.3 REQUIRED. DME/DME RNP-0.3 NA. For inoperative MALS, increase LNAV Cat A and B visibility to RVR 5000, and Cat E to 2 miles. For inoperative MALS, increase LNAV/VNAV Cat E visibility to 2¾. When VGSi inoperative circling Rwy 34L not authorized at night. Circling not authorized east of runway 16L-34R. BARO-VNAV NA below -16°C (4°F).

MALS



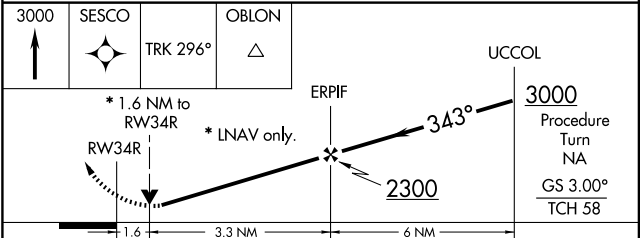
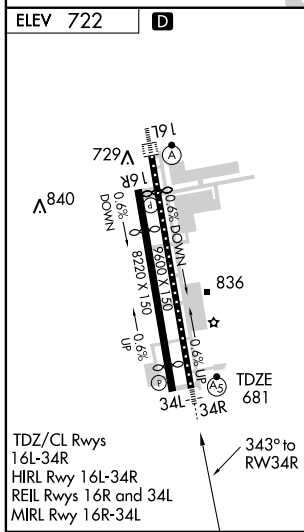
MISSED APPROACH: Climb to 3000 direct SESCO WP and via 296° track to OBLON WP and hold.

ATIS 126.925	ASOS 126.925	REGIONAL APP CON 118.1 306.95	ALLIANCE TOWER 135.15 288.15	GND CON 132.65 306.2	CLNC DEL 128.725
------------------------	------------------------	---	--	--------------------------------	----------------------------



SC-2, 22 OCT 2009 to 19 NOV 2009

SC-2, 22 OCT 2009 to 19 NOV 2009



CATEGORY	A	B	C	D	E
GLS DA	NA				
LNAV/VNAV DA	1420-2¼ 739 (700-2¼)				
LNAV MDA	1240/40	559 (600-¾)	1240/50 559 (600-1)	1240/60 559 (600-1¼)	1240-1½ 559 (600-1½)
CIRCLING	1240-2¾ 518 (600-2¾)	1260-2¾ 538 (600-2¾)	1320-2¾ 598 (600-2¾)	1380-2¾ 658 (700-2¾)	