

JOE POOL THREE DEPARTURE

SL-6917 (FAA)

FORT WORTH, TEXAS

GND CON 119.475
 SPINKS TOWER*
 124.625 (CTAF)
 REGIONAL DEP CON
 135.975 379.9
 AWOS-3 120.025

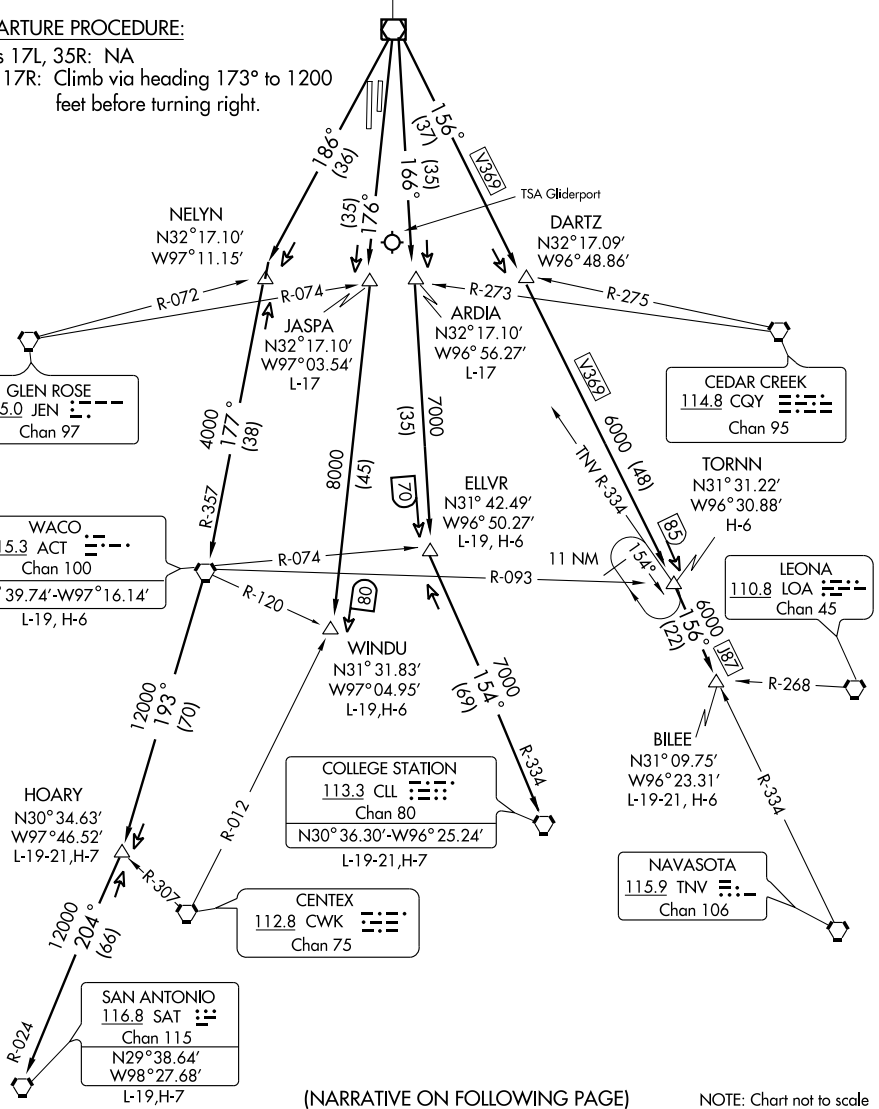
TAKE-OFF MINIMUMS:

Rwys 17L/35R: NA
 Rwys 17R/35L: Standard.

DEPARTURE PROCEDURE:

Rwys 17L, 35R: NA
 Rwy 17R: Climb via heading 173° to 1200 feet before turning right.

MAVERICK
 113.1 TTT
 Chan 78
 N32°52.15'-W97°02.43'



SC-2, 22 OCT 2009 to 19 NOV 2009

SC-2, 22 OCT 2009 to 19 NOV 2009

(NARRATIVE ON FOLLOWING PAGE)

NOTE: Chart not to scale

JOE POOL THREE DEPARTURE