

EMMONAK, ALASKA

AL-6916 (FAA)

VOR/DME ENM 117.8 Chan 125	APP CRS 159°	Rwy Idg TDZE Apt Elev	4601 17 17
---	------------------------	-----------------------------	---------------------------------------

VOR RWY 16
EMMONAK (ENM) (PAEM)

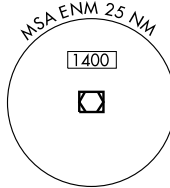
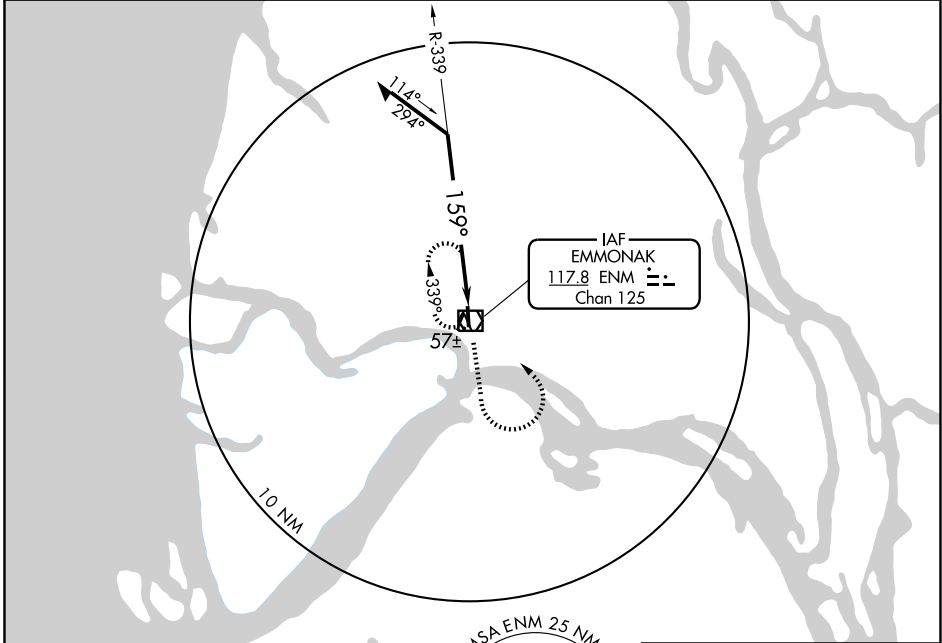
⚠ If local altimeter setting not received, use St. Mary's altimeter setting and increase all MDAs 180 feet.
VDP not authorized with St. Mary's altimeter setting.

MISSED APPROACH: Climb to 2000 then left turn direct ENM VOR/DME and hold.

AWOS-3
135.35

ANCHORAGE CENTER
124.5

CTAF
122.9



Remain within 10 NM

VOR/DME

2000

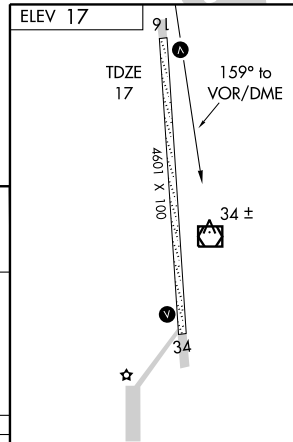
ENM
117.8

1500

ENM
1.5

0.9

CATEGORY	A	B	C	D
S-16	340-1 323 (400-1)			
CIRCLING	380-1 363 (400-1)	480-1 463 (500-1)	480-1½ 463 (500-1½)	580-2 563 (600-2)



REIL Rwy 34
MIRL Rwy 16-34

EMMONAK, ALASKA
Amdt 1 09239

62°47'N-164°29'W

EMMONAK (ENM) (PAEM)
VOR RWY 16

AK, 22 OCT 2009 to 17 DEC 2009

AK, 22 OCT 2009 to 17 DEC 2009