

RNAV (GPS) RWY 34

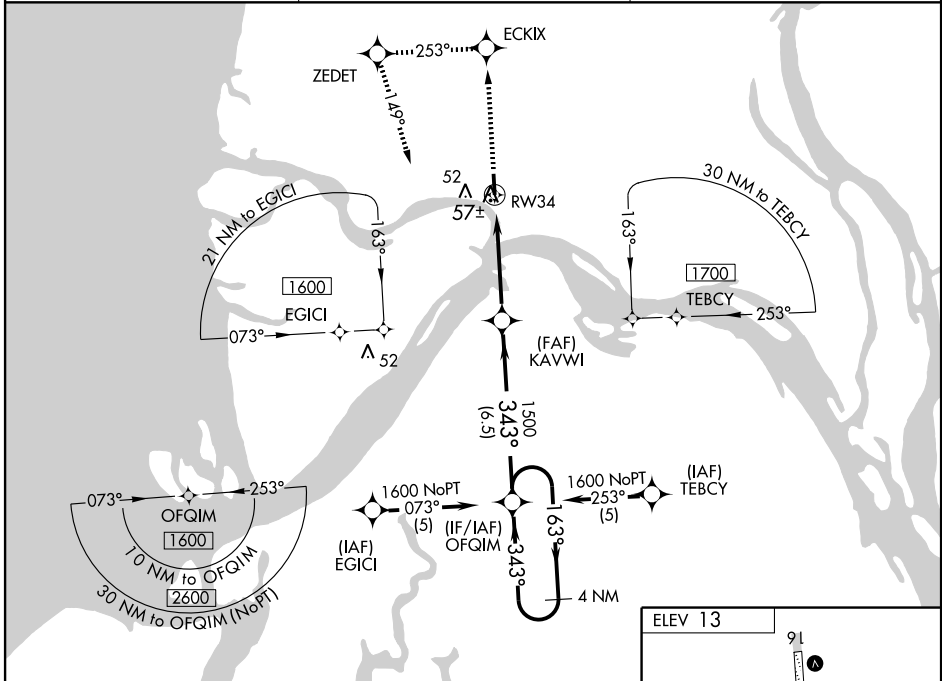
EMMONAK (ENM) (PAEM)

WAAS CH 42502 W34A	APP CRS 343°	Rwy Idg TDZE Apt Elev	4601 13 13
--	------------------------	-----------------------------	---------------------------------------

⚠ If local altimeter setting not received, use St Mary's altimeter setting and increase all DAs 168 feet and MDAs 180 feet. VDP NA with St Mary's altimeter setting. DME/DME RNP- 0.3 NA. BARO-VNAV NA when using St Mary's altimeter setting. For uncompensated BARO-VNAV systems, LNAV/VNAV NA below -25°C (-13°F) or above 48°C (119°F).

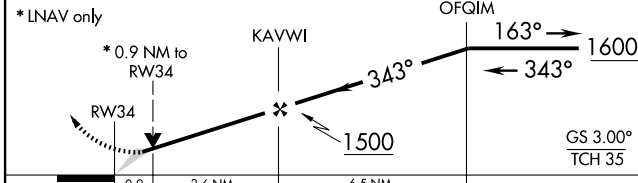
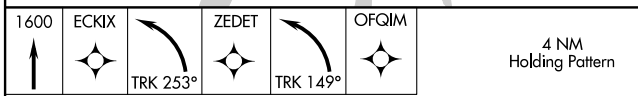
⚠ MISSED APPROACH: Climb to 1600 direct ECKIX and left turn via 253° track to ZEDET and left turn via 149° track to OFQIM and hold.

AWOS-3 135.35	ANCHORAGE CENTER 124.5	CTAF 122.9
-------------------------	----------------------------------	----------------------



AK, 22 OCT 2009 to 17 DEC 2009

AK, 22 OCT 2009 to 17 DEC 2009



CATEGORY	A	B	C	D
LPV DA		263-1	250 (300-1)	
LNAV/VNAV DA		317-1	304 (400-1)	
LNAV MDA		320-1	307 (400-1)	
CIRCLING	380-1	480-1	480-1½	580-2
	367 (400-1)	467 (500-1)	467 (500-1½)	567 (600-2)

