

RNAV (GPS) RWY 16

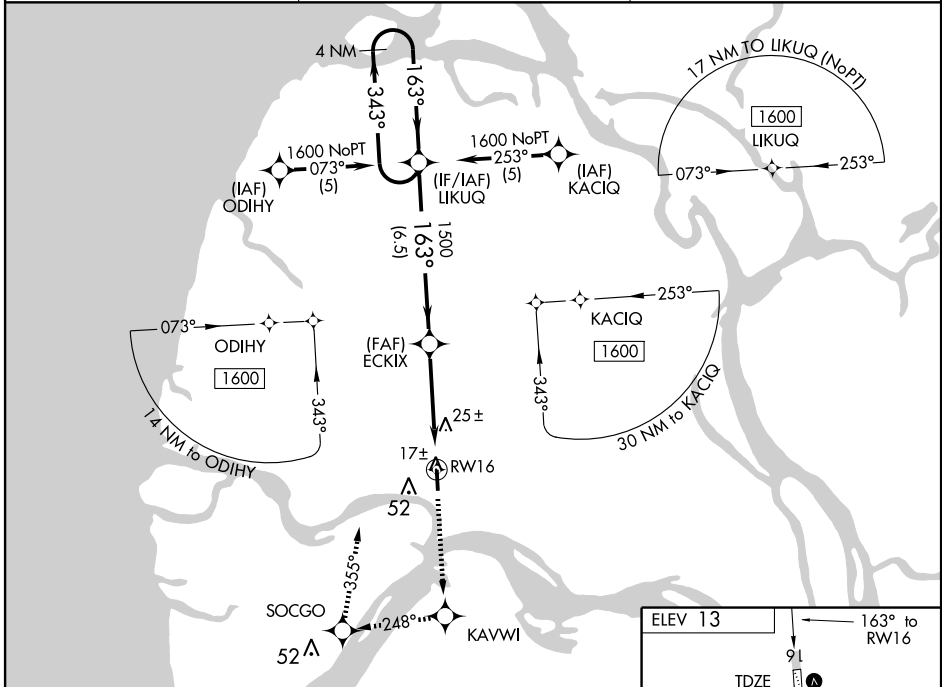
EMMONAK (ENM) (PAEM)

WAAS CH 86702 W16A	APP CRS 163°	Rwy Idg TDZE Apt Elev	4601 13 13
----------------------------------------	------------------------	-----------------------------	---------------------------------------

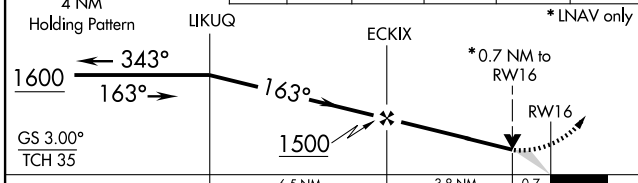
▼ If local altimeter setting not received, use St Mary's altimeter setting and increase all DAs 168 feet and all MDAs 180 feet. VDP NA with St Mary's altimeter setting. DME/DME RNP- 0.3 NA. BARO-VNAV NA when using St Mary's altimeter setting. For uncompensated BARO-VNAV systems, LNAV/VNAV NA below -25°C (-13°F) or above 48°C (119°F).

MISSED APPROACH: Climb to 1600 direct KAVWI and right turn via 248° track to SOCGO and right turn via 355° track to LIKUQ and hold.

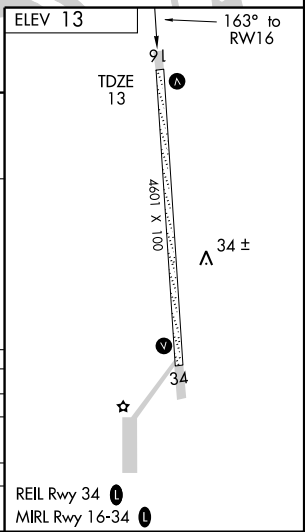
AWOS-3 135.35	ANCHORAGE CENTER 124.5	CTAF 122.9
-------------------------	----------------------------------	----------------------



VGSI and RNAV glidepath not coincident.	1600	KAVWI	SOCGO	LIKUQ
	↑	✦	✦	✦
		TRK 248°	TRK 355°	



CATEGORY	A	B	C	D
LPV DA		263-1	250 (300-1)	
LNAV/VNAV DA		277-1	264 (300-1)	
LNAV MDA		280-1	267 (300-1)	
CIRCLING	380-1 367 (400-1)	480-1 467 (500-1)	480-1½ 467 (500-1½)	580-2 567 (600-2)



AK, 22 OCT 2009 to 17 DEC 2009

AK, 22 OCT 2009 to 17 DEC 2009