

GLENDALE, ARIZONA

AL-6915 (FAA)

# RNAV (GPS) RWY 19

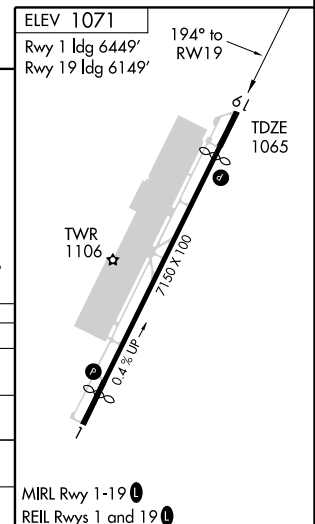
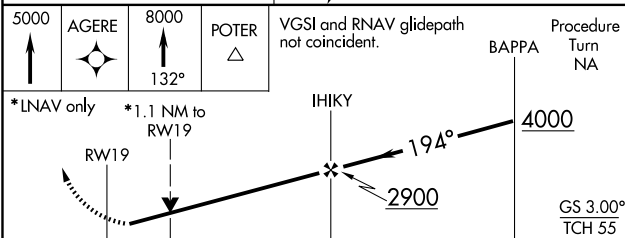
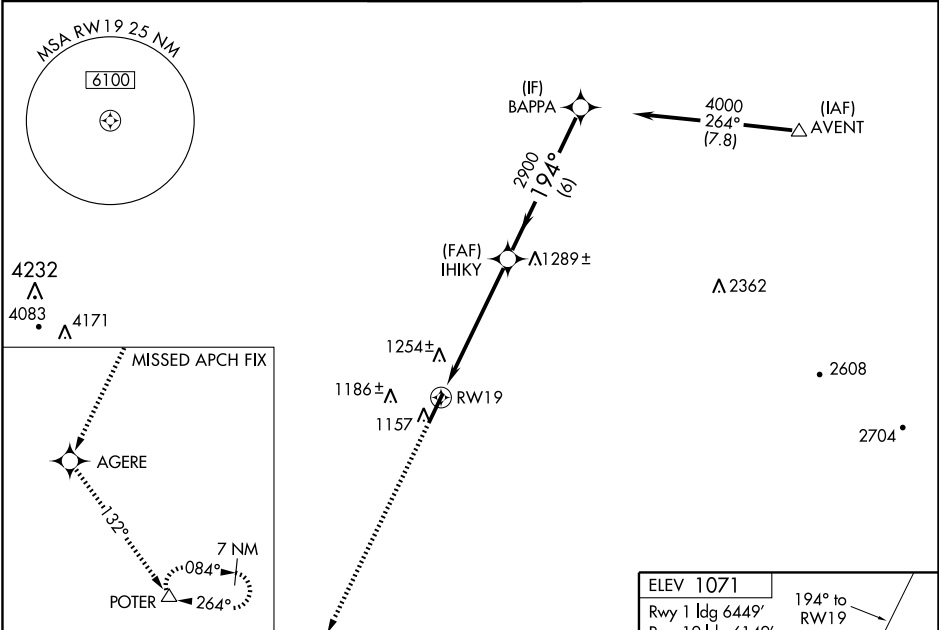
GLENDALE MUNI (GEU)

WAAS CH <b>87004</b> <b>W19A</b>	APP CRS <b>194°</b>	Rwy ldg <b>6149</b> TDZE <b>1065</b> Apt Elev <b>1071</b>
--	------------------------	---

**⚠** Circling not authorized west of Rwy 1-19. DME/DME RNP-0.3 NA.  
**⚠ NA** If local altimeter setting not received, use Phoenix Sky Harbor Intl altimeter setting and increase all DAs/MDAs 60 feet.  
 VDP and Baro-VNAV NA when using Phoenix Sky Harbor Intl altimeter setting. Visibility reduction by helicopters NA.  
 For uncompensated Baro-VNAV systems, LNAV/VNAV NA below -17°C (2°F) or above 47°C (116°F).

**MISSED APPROACH:** Climb to 5000 direct AGERE then climb to 8000 via 132° track to POTER and hold.

ATIS <b>119.425</b>	LUKE APP CON* <b>118.15 363.12</b>	GLENDALE TOWER* <b>121.0 (CTAF) 0</b>	GND CON <b>118.0</b>	UNICOM <b>122.95</b>
------------------------	---------------------------------------	--	-------------------------	-------------------------



CATEGORY	A	B	C	D
LPV DA	1339-1 274 (300-1)			
LNAV/VNAV DA	1572-1¾ 507 (600-1¾)			
LNAV MDA	1540-1 475 (500-1)	1540-1¼ 475 (500-1¼)	1540-1½ 475 (500-1½)	
CIRCLING	1540-1 469 (500-1)	1540-1½ 469 (500-1½)	1640-2 569 (600-2)	

GLENDALE, ARIZONA  
Amdt 1 08325

33°32'N - 112°18'W

# RNAV (GPS) RWY 19

SW-4, 22 OCT 2009 to 19 NOV 2009

SW-4, 22 OCT 2009 to 19 NOV 2009