

LAKE CITY, SOUTH CAROLINA

AL-6914 (FAA)

# RNAV (GPS) RWY 19

LAKE CITY MUNI C J EVANS FIELD (51J)

APP CRS	Rwy Idg	<b>3700</b>
<b>192°</b>	TDZE	<b>80</b>
	Apt Elev	<b>80</b>

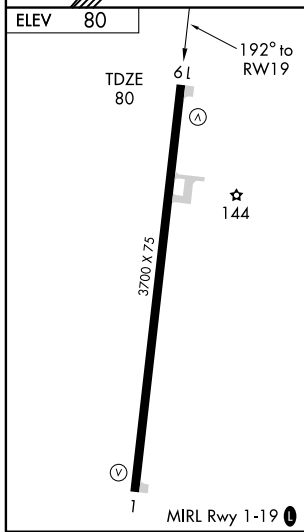
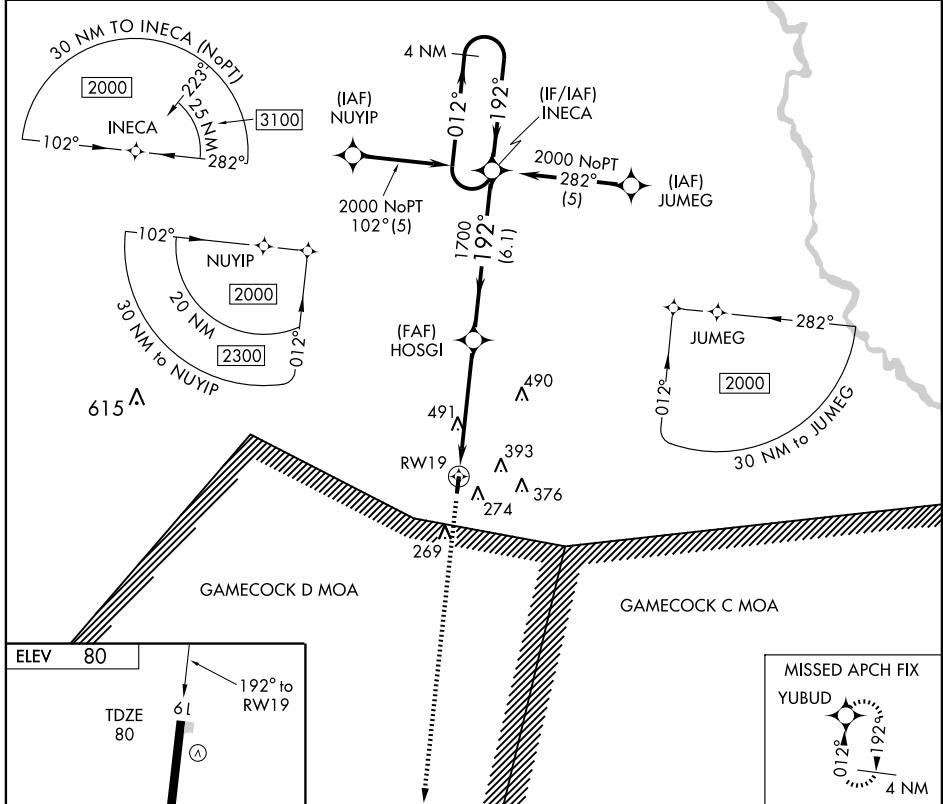
**▼** DME/DME RNP-0.3 NA. Straight-in minimums NA at night.  
**▲** NA Use Kingstree altimeter setting; if not received, use Florence altimeter setting and increase all MDAs 40 feet.  
 Visibility reduction by helicopters NA.

MISSED APPROACH: Climb to 2000 direct YUBUD and hold.

WILLIAMSBURG RGNL AWOS-3 <b>124.775</b>	FLORENCE APP CON * <b>135.25 316.15</b>	CTAF <b>122.9 0</b>
--	--	------------------------

SE-2, 22 OCT 2009 to 19 NOV 2009

SE-2, 22 OCT 2009 to 19 NOV 2009



	VGSI and descent angles not coincident.		4 NM INECA Holding Pattern	
CATEGORY	A	B	C	D
LNAV MDA	820-1 740 (800-1)		820-2 740 (800-2)	NA
CIRCLING	820-1 740 (800-1)		880-2 1/4 800 (800-2 1/4)	NA

LAKE CITY, SOUTH CAROLINA  
 Orig 08157

33° 51'N-79° 46'W

# RNAV (GPS) RWY 19