

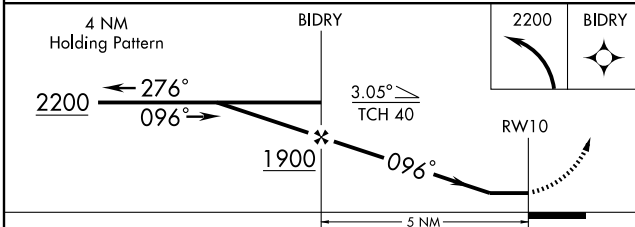
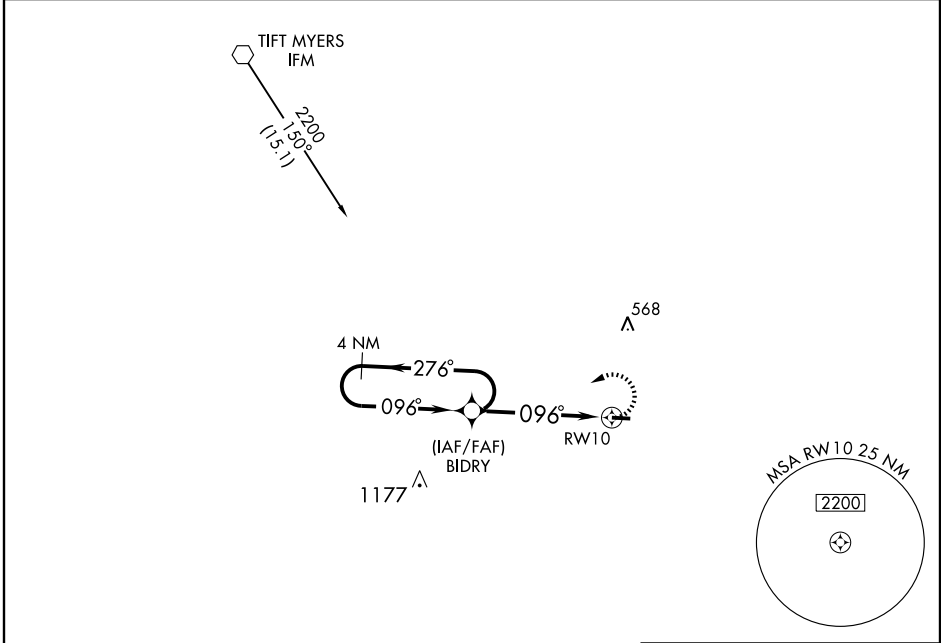
GPS RWY 10

NASHVILLE/ BERRIEN COUNTY (4J2)

APP CRS	Rwy Idg	4006
096°	TDZE	241
	Apt Elev	241

<p>▲ NA Use Moody AFB altimeter setting, when not available, procedure not authorized.</p>	<p>MISSED APPROACH: Climbing left turn to 2200 direct BIDRY WP and hold.</p>
---	---

<p>VALDOSTA APP CON ★ 126.6 285.6</p>	<p>UNICOM 122.7 (CTAF)</p>	<p>GCO 121.725</p>
--	---------------------------------------	-------------------------------



CATEGORY	A	B	C	D
S-10	740-1 499 (500-1)		740-1¼ 499 (500-1¼)	NA
CIRCLING	820-1 579 (600-1)		820-1½ 579 (600-1½)	NA

ELEV 241

096° to RWY 10

400± X 75

28

TDZE 241

▲ 399±

▲ 427±

MIRL Rwy 10-28

REIL Rwys 10 and 28

GPS RWY 10

SE-4, 22 OCT 2009 to 19 NOV 2009

SE-4, 22 OCT 2009 to 19 NOV 2009