

JASPER, GEORGIA

AL-6910 (FAA)

RNAV (GPS) RWY 16

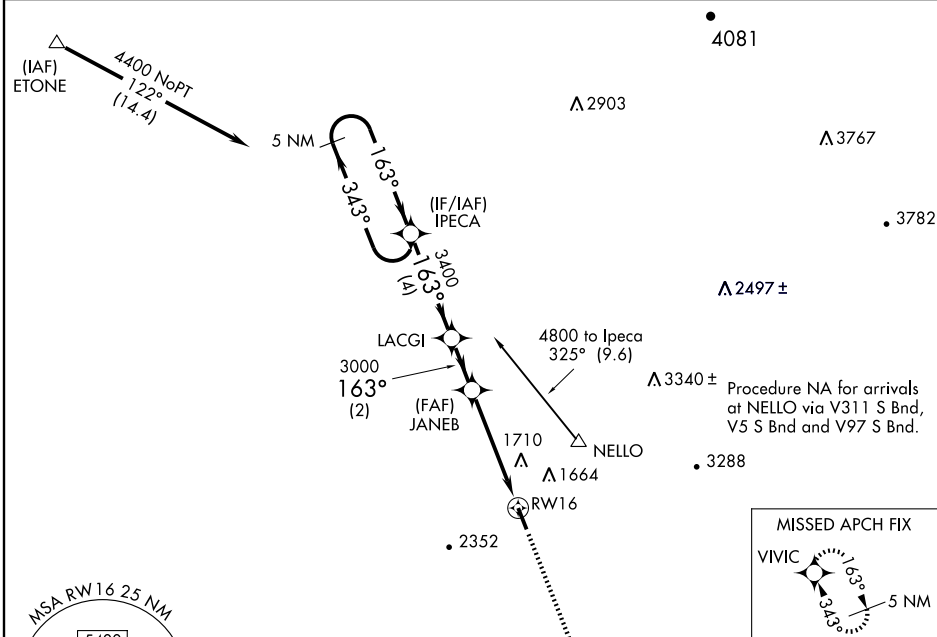
JASPER/PICKENS COUNTY (JZP)

WAAS CH 82005 W16A	APP CRS 163°	Rwy Idg TDZE 1515 Apt Elev 1535
--	------------------------	---

NA If local altimeter setting not received, use Cobb County-Mc Collum Field altimeter setting and increase all DAs/MDAs 140 feet. DME/DME RNP-0.3 NA. Visibility reduction by helicopters NA.

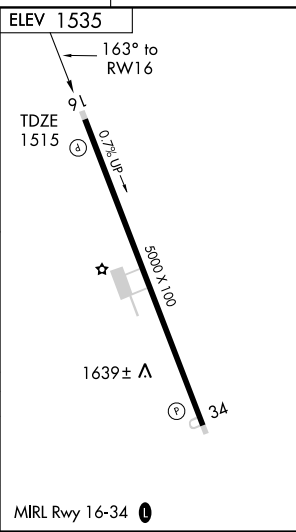
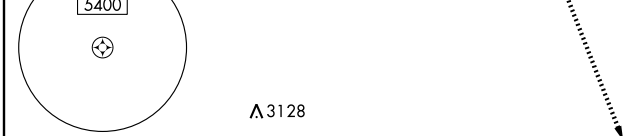
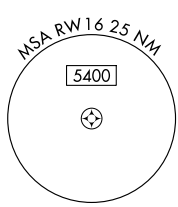
MISSED APPROACH: Climb to 4000 direct VIVIC and hold.

AWOS-A 285	ATLANTA CENTER 133.1 290.8	GCO 121.725	UNICOM 122.725 (CTAF) 0
----------------------	--------------------------------------	-----------------------	--



SE-4, 22 OCT 2009 to 19 NOV 2009

SE-4, 22 OCT 2009 to 19 NOV 2009



	5 NM Holding Pattern IPECA		VGS1 and RNAV glidepath not coincident.		4000	VIVIC
	4400 ← 343° / 163° → 3400		LACGI JANE B RWY 16		↑	✦
	GS 3.00° TCH 40		3000			
	4 NM		2 NM		4.5 NM	
CATEGORY	A	B	C	D		
LPV DA	1929-1½ 414 (400-1½)			NA		
LNVA MDA	1960-1	445 (500-1)	1960-1¼ 445 (500-1¼)	NA		
CIRCLING	1960-1 425 (500-1)	2160-1 625 (700-1)	2360-2½ 825 (900-2½)	NA		

JASPER, GEORGIA
Orig 08101

34°27'N - 84°27'W

RNAV (GPS) RWY 16