

RNAV (GPS) RWY 35

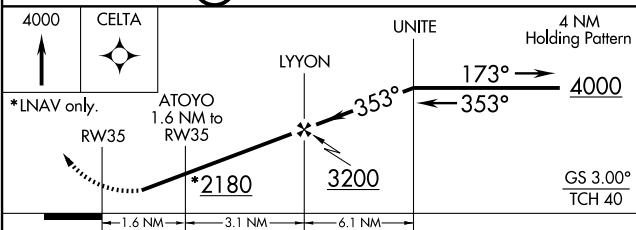
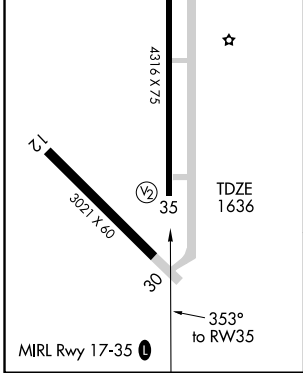
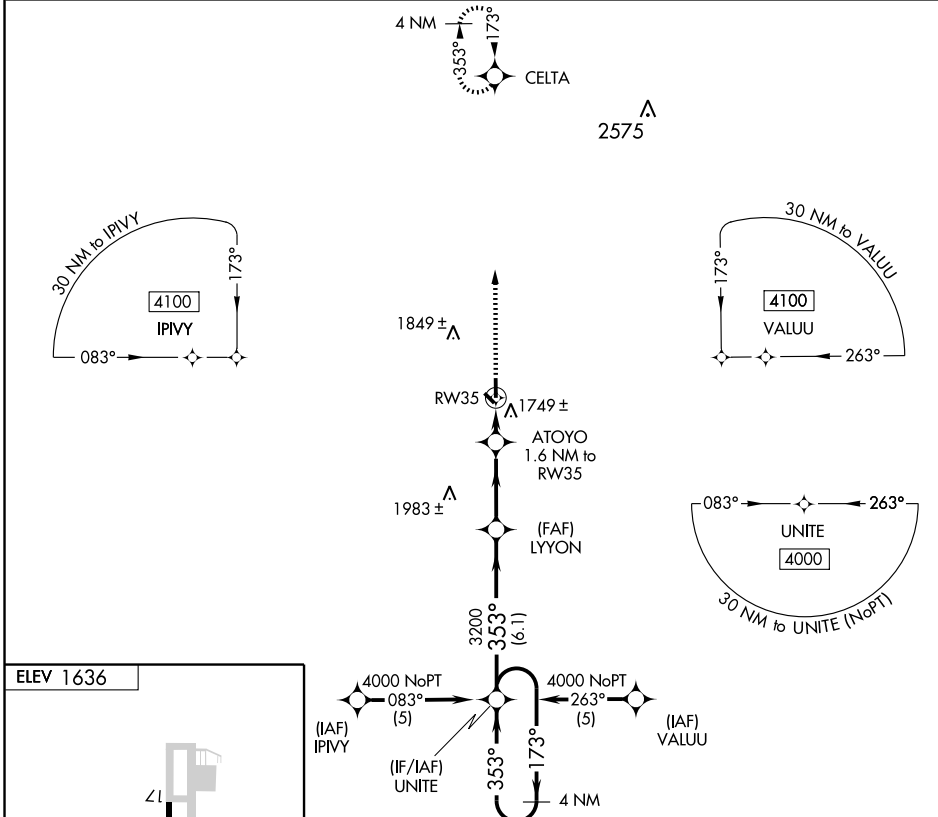
FAIRMONT STATE AIRFIELD (F^MMZ)

WAAS CH 93614 W35A	APP CRS 353°	Rwy Idg TDZE Apt Elev	4316 1636 1636
--	------------------------	-----------------------------	---

▽ DME/DME RNP-0.3 NA. Visibility reduction by helicopters NA. Use York altimeter setting, when not received use Hebron altimeter setting and increase all DA 36 feet, all MDA 40 feet. Increase LPV all Cats visibility ¼ mile. Baro-VNAV N/A.

MISSED APPROACH: Climb to 4000 direct CELTA and hold.

AWOS-3 124.175	MINNEAPOLIS CENTER 119.4 278.8	CTAF 122.9 0
--------------------------	--	------------------------



CATEGORY	A	B	C	D
LPV DA	1934-1	298 (300-1)		NA
LNAV/VNAV DA	2094-1¾	458 (500-1¾)		NA
LNAV MDA	2060-1	424 (500-1)		NA
CIRCLING	2120-1	484 (500-1)		NA

NC-2, 22 OCT 2009 to 19 NOV 2009

NC-2, 22 OCT 2009 to 19 NOV 2009