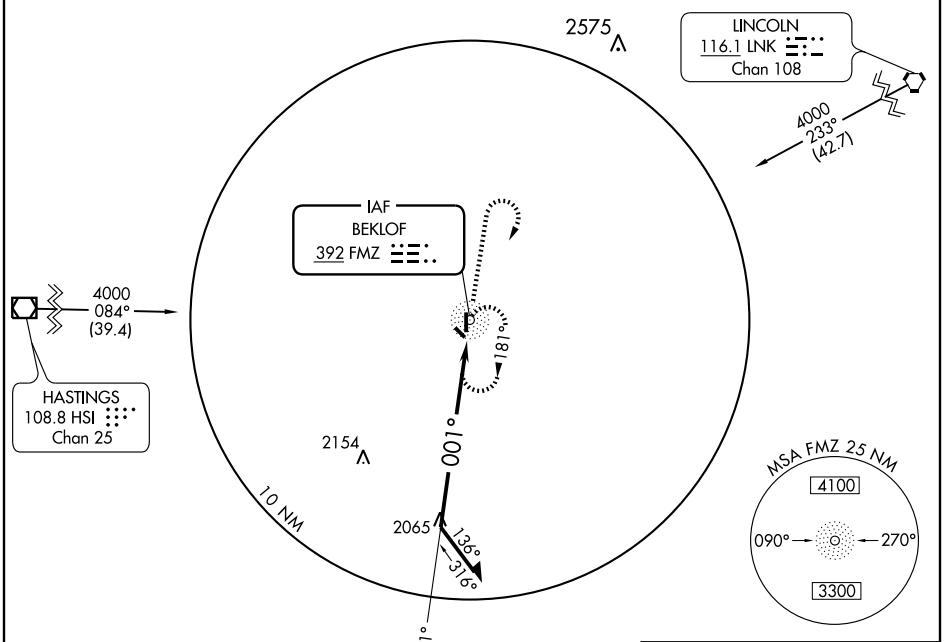


NDB FMZ <b>392</b>	APP CRS <b>001°</b>	Rwy ldg TDZE Apt Elev	<b>4316</b> <b>1635</b> <b>1636</b>
-----------------------	------------------------	-----------------------------	---

**NDB RWY 35**  
FAIRMONT STATE AIRFIELD (F'MZ)

<b>NA</b>	Use York altimeter setting.	MISSED APPROACH: Climb to 3200 then right turn direct FMZ NDB and hold.
-----------	-----------------------------	---

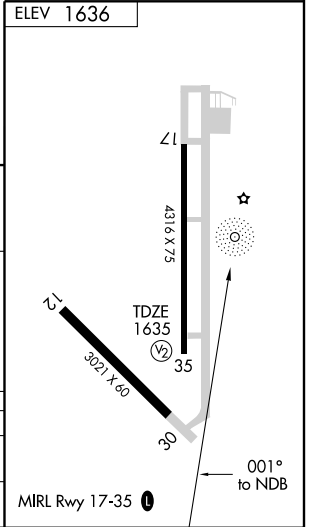
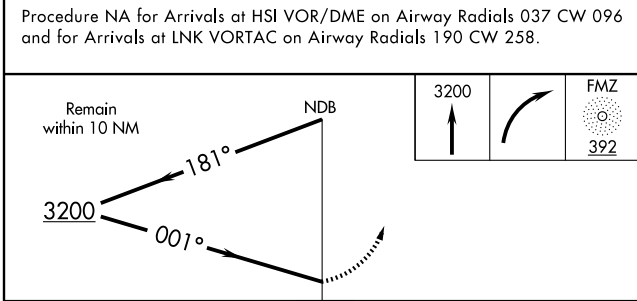
AWOS-3 <b>124.175</b>	MINNEAPOLIS CENTER <b>119.4 278.8</b>	CTAF <b>122.9</b>
--------------------------	--	----------------------



NC-2, 22 OCT 2009 to 19 NOV 2009

NC-2, 22 OCT 2009 to 19 NOV 2009

Procedure NA for Arrivals at HSI VOR/DME on Airway Radials 037 CW 096 and for Arrivals at LNK VORTAC on Airway Radials 190 CW 258.



CATEGORY	A	B	C	D
S-35	2420-1 785 (800-1)	2420-1¼ 785 (800-1¼)	NA	
CIRCLING	2420-1 784 (800-1)	2420-1¼ 784 (800-1¼)	NA	