

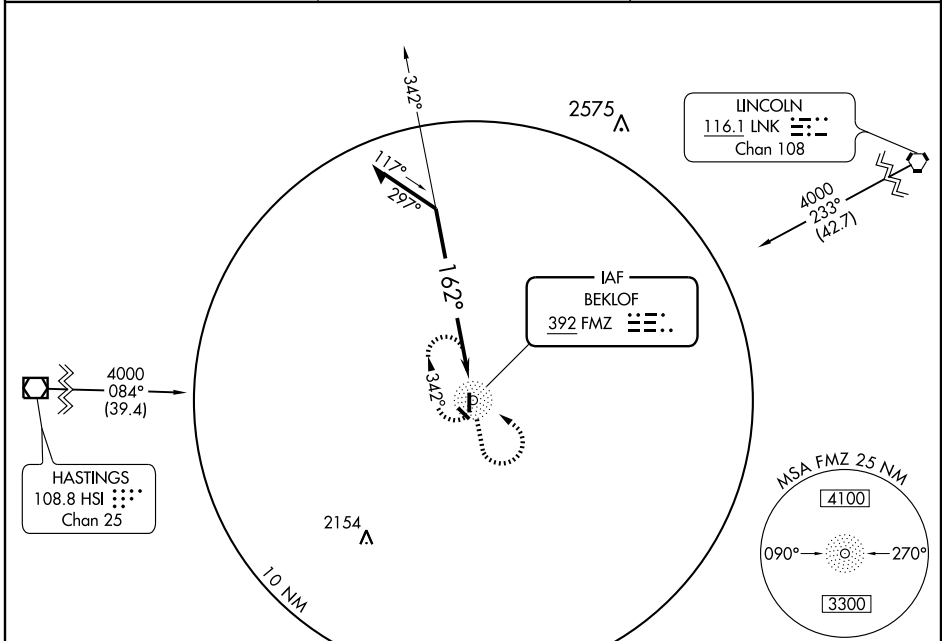
NDB RWY 17

FAIRMONT STATE AIRFIELD (FMZ)

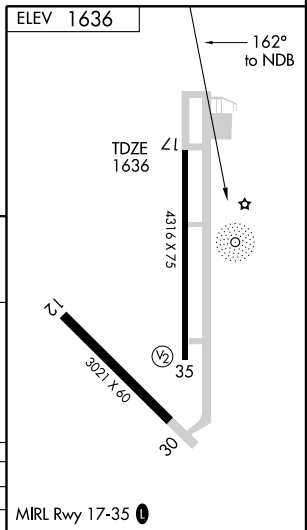
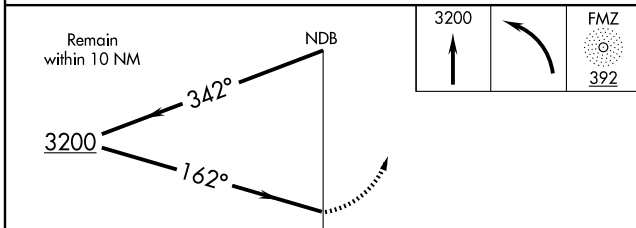
NDB FMZ 392	APP CRS 162°	Rwy Idg TDZE 1636 Apt Elev 1636
-----------------------	------------------------	---

<p>NA Use York altimeter setting.</p>	<p>MISSED APPROACH: Climb to 3200 then left turn direct FMZ NDB and hold.</p>
--	---

<p>AWOS-3 124.175</p>	<p>MINNEAPOLIS CENTER 119.4 278.8</p>	<p>CTAF 122.9</p>
----------------------------------	--	------------------------------



Procedure NA for Arrivals at HSI VOR/DME on Airway Radials 037 CW 096 and for Arrivals at LNK VORTAC on Airway Radials 190 CW 258.



CATEGORY	A	B	C	D
S-17	2340-1	704 (800-1)		NA
CIRCLING	2340-1	704 (800-1)		NA

NC-2, 22 OCT 2009 to 19 NOV 2009

NC-2, 22 OCT 2009 to 19 NOV 2009