

SALEM, OHIO

AL-6906 (FAA)

VOR or GPS-A  
SALEM AIRPARK INC (38D)

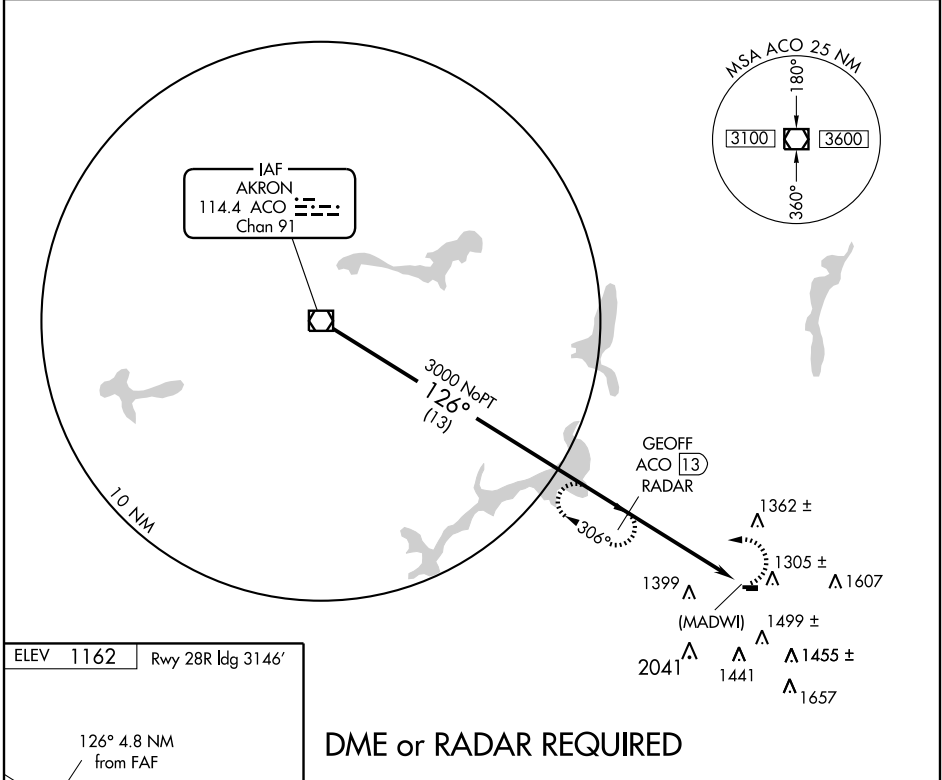
VOR/DME ACO <b>114.4</b> Chan <b>91</b>	APP CRS <b>126°</b>	Rwy ldg TDZE App Elev	<b>N/A</b> <b>N/A</b> <b>1162</b>
---	------------------------	-----------------------------	---

▼  
▲ NA Obtain local altimeter on CTAF, when not received, use Youngstown altimeter setting.

MISSED APPROACH: Climbing left turn to 3000 via ACO R-126 to GEOFF and hold.

AKRON-CANTON APP CON \*  
**125.5 371.875**

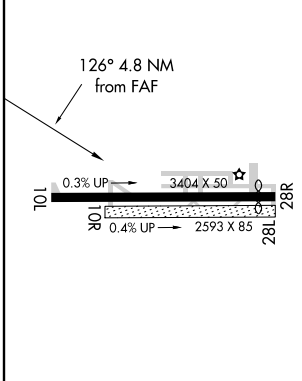
UNICOM  
**122.7 (CTAF)**



EC-2, 22 OCT 2009 to 19 NOV 2009

EC-2, 22 OCT 2009 to 19 NOV 2009

ELEV 1162	Rwy 28R ldg 3146'
-----------	-------------------



DME or RADAR REQUIRED

VOR/DME Procedure Turn NA 3000 — 126° — 3000	GEOFF ACO (13) RADAR		3000 ACO R-126	GEOFF INT
	13 NM		4.8 NM	
CATEGORY	A	B	C	D
CIRCLING	1680-1	518 (600-1)	1720-1½ 558 (600-1½)	NA
YOUNGSTOWN ALTIMETER SETTING MINIMUMS				
CIRCLING	1740-1	578 (600-1)	1780-1¾ 618 (700-1¾)	NA

LIRL Rwy 10L-28R

FAF to MAP 4.8 NM					
Knots	60	90	120	150	180
Min:Sec	4:48	3:12	2:24	1:55	1:36

SALEM, OHIO  
Amdt 1 07354

40°57'N - 80°52'W

SALEM AIRPARK INC (38D)  
VOR or GPS-A