

RNAV (GPS) RWY 35

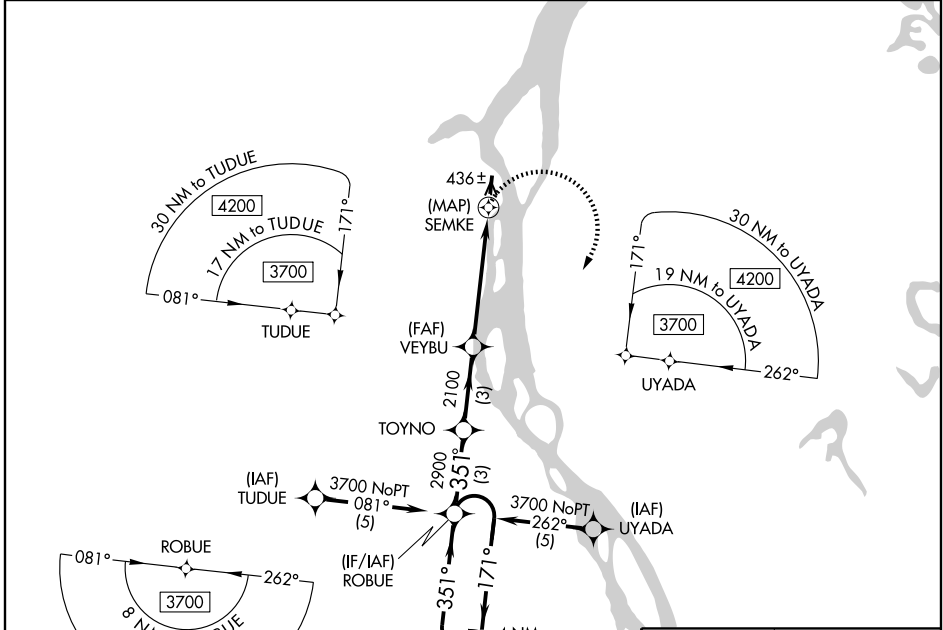
ANVIK (ANV)(PANV)

| | |
|------------------------|------------------------|
| APP CRS 351° | Rwy Idg 4000 |
| | TDZE 290 |
| | Apt Elev 309 |

▼ When VGSI inoperative, procedure NA at night.
▲ DME/DME RNP-0.3 NA. Visibility reduction by helicopters NA.
 When local altimeter setting not received, use Holy Cross altimeter setting and increase all MDAs 120 feet and LNAV visibility Cat C ¼ mile, Cat D ½ mile.

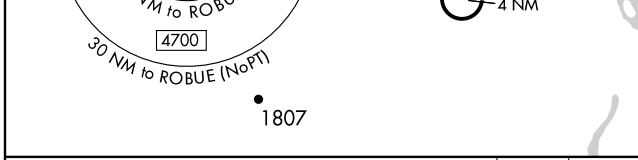
MISSED APPROACH: Climbing right turn to 3700 direct ROBUE and hold, continue climb-in-hold to 3700.

| | | | |
|-------------------------|--|-----------------------------|---------------------------------|
| AWOS-3 133.55 | ANCHORAGE CENTER 135.7 335.5 | KENAI RADIO 122.4 | UNICOM 122.7 (CTAF) 0 |
|-------------------------|--|-----------------------------|---------------------------------|

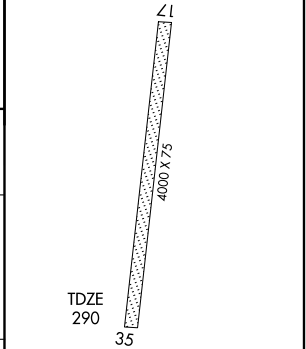
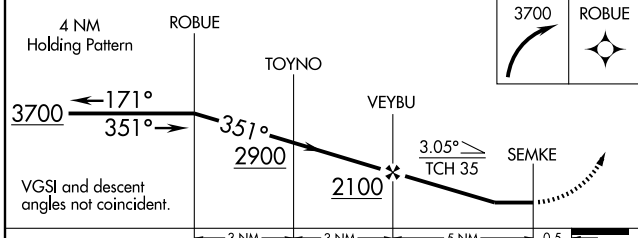


AK, 22 OCT 2009 to 17 DEC 2009

AK, 22 OCT 2009 to 17 DEC 2009



| |
|----------|
| ELEV 309 |
|----------|



| CATEGORY | A | B | C | D |
|----------|----------------------|----------------------|------------------------|----------------------|
| LNAV MDA | 700-1 | 410 (400-1) | 700-1½ | 410 (400-1½) |
| CIRCLING | 740-1 431 (500-1) | 760-1 451 (500-1) | 760-1½ 451 (500-1½) | 860-2 551 (600-2) |

MIRL Rwy 17-35 0
REIL Rwys 17 and 35