

RNAV (GPS) RWY 17

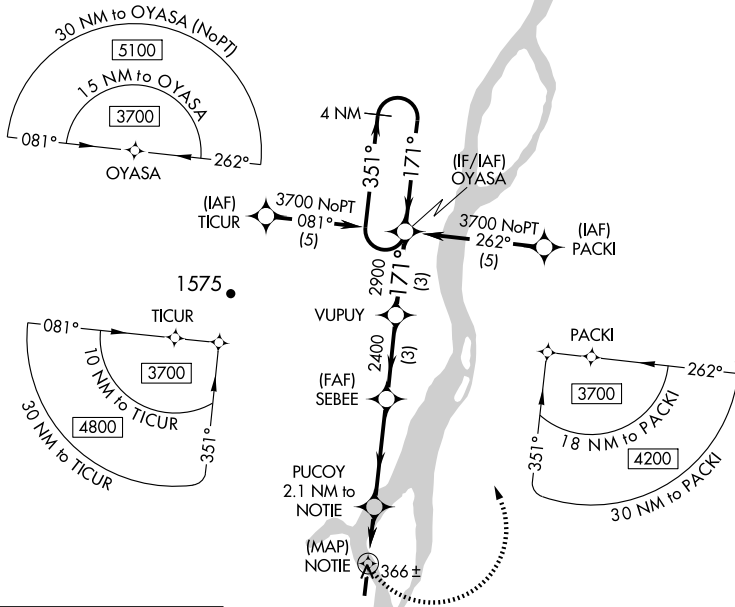
ANVIK (ANV)(PANV)

APP CRS 171°	Rwy Idg 4000
	TDZE 288
	Apt Elev 309

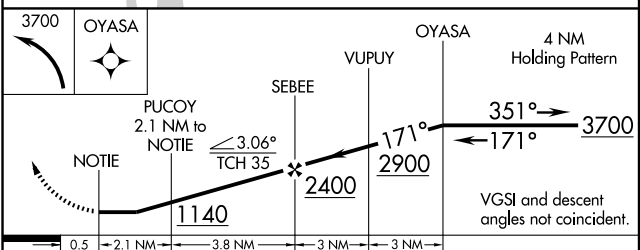
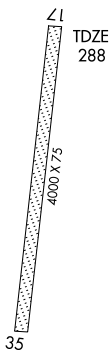
⚠ When VGSi inoperative, procedure NA at night.
⚠ DME/DME RNP: 0.3 NA. Visibility reduction by helicopters NA.
 When local altimeter setting not received, use Holy Cross altimeter setting and increase all MDAs 120 feet and LNAV visibility Cat C ¼ mile, Cat D ½ mile.

MISSED APPROACH: Climbing left turn to 3700 direct OYASA and hold, continue climb-in-hold to 3700.

AWOS-3 133.55	ANCHORAGE CENTER 135.7 335.5	KENAI RADIO 122.4	UNICOM 122.7 (CTAF) 0
-------------------------	--	-----------------------------	---------------------------------



ELEV 309



CATEGORY	A	B	C	D
LNAV MDA	700-1	412 (400-1)	700-1¼	412 (400-1¼)
CIRCLING	740-1 431 (500-1)	760-1 451 (500-1)	760-1½ 451 (500-1½)	860-2 551 (600-2)