

ANVIK, ALASKA

AL-6905 (FAA)

NDB/DME ANV 365	APP CRS 360°	Rwy Idg TDZE Apt Elev	4000 309 309
Chan 71 (112.4)			

NDB RWY 35

ANVIK (ANV)(PANV)

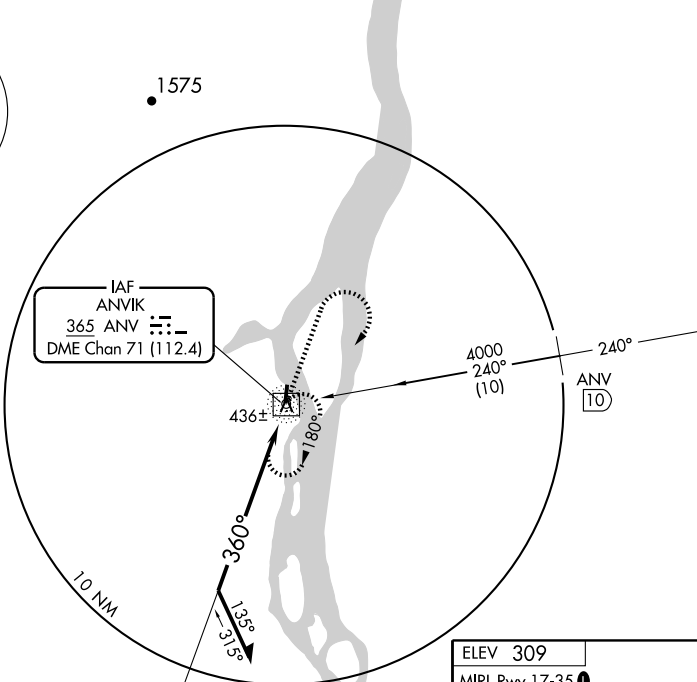
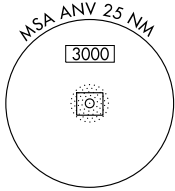
MISSED APPROACH: Climb to 2500 via 360° bearing from ANV NDB/DME, then turn right direct ANV and hold.

AWOS-3
133.55

ANCHORAGE CENTER
135.7 335.5

KENAI RADIO
122.4

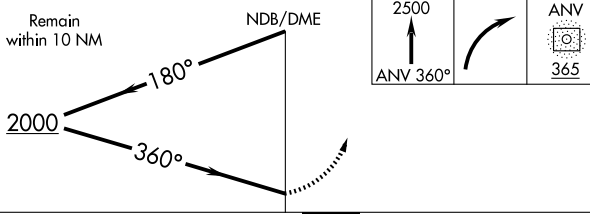
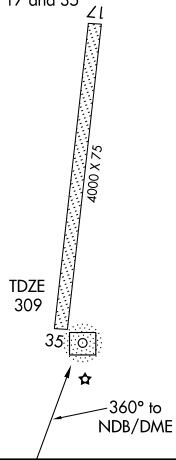
UNICOM
122.7 (CTAF)



AK, 22 OCT 2009 to 17 DEC 2009

AK, 22 OCT 2009 to 17 DEC 2009

ELEV 309
MIRL Rwy 17-35
REIL Rwys 17 and 35



CATEGORY	A	B	C	D
S-35	800-1	491 (500-1)	800-1¼ 491 (500-1¼)	NA
CIRCLING	800-1	491 (500-1)	800-1½ 491 (500-1½)	NA

ANVIK, ALASKA
Orig 09295

62° 39' N-160° 11' W

ANVIK (ANV)(PANV) NDB RWY 35