

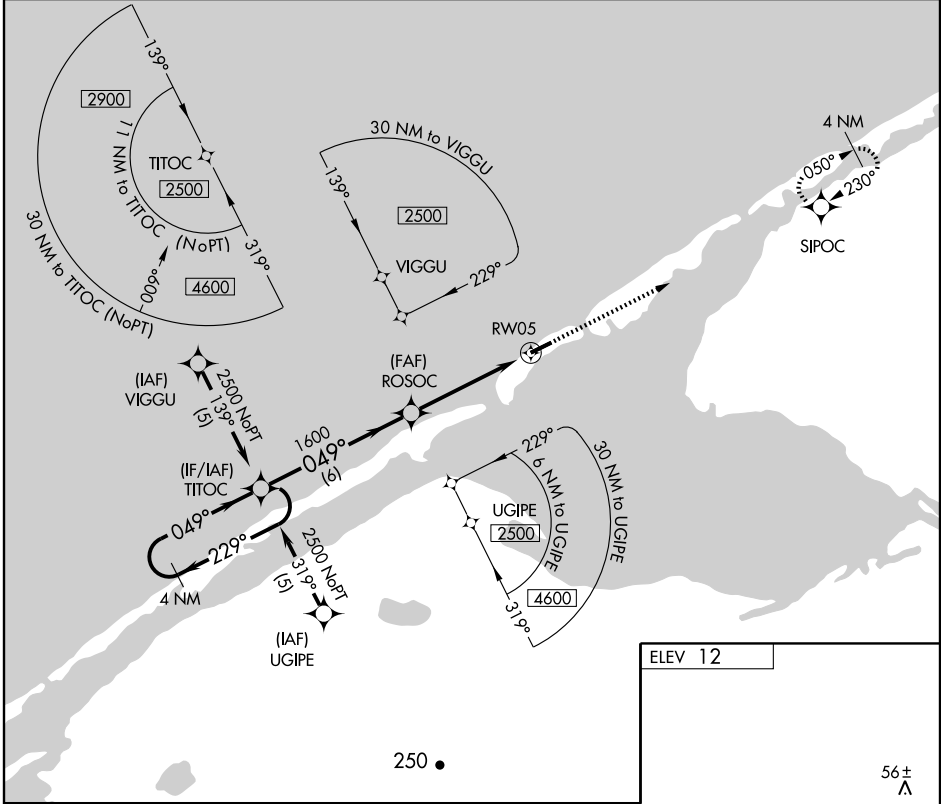
RNAV (GPS) RWY 5

SHISHMAREF (SHH) (PASH)

APP CRS 049°	Rwy Idg 5000 TDZE 12 Apt Elev 12
------------------------	---

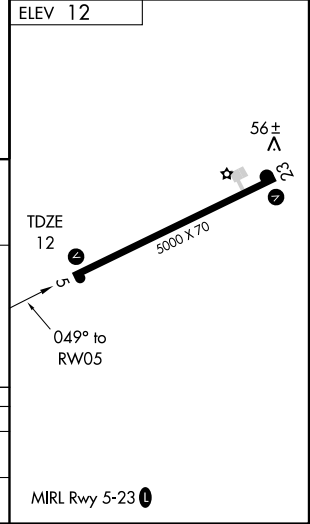
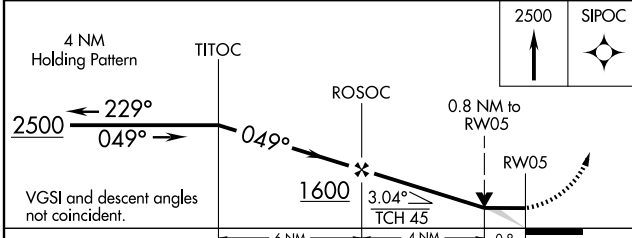
DME/DME RNP-0.3 NA.		MISSED APPROACH: Climb to 2500 direct SIPOC and hold.	
---------------------	--	---	--

AWOS-3 121.1	ANCHORAGE CENTER 119.2 263.0	NOME RADIO 122.4	CTAF 123.0
------------------------	--	----------------------------	----------------------



AK, 22 OCT 2009 to 17 DEC 2009

AK, 22 OCT 2009 to 17 DEC 2009



CATEGORY	A	B	C	D
LNVA MDA	300-1 288 (300-1)			
CIRCLING	420-1 408 (500-1)	480-1 468 (500-1)	480-1½ 468 (500-1½)	580-2 568 (600-2)