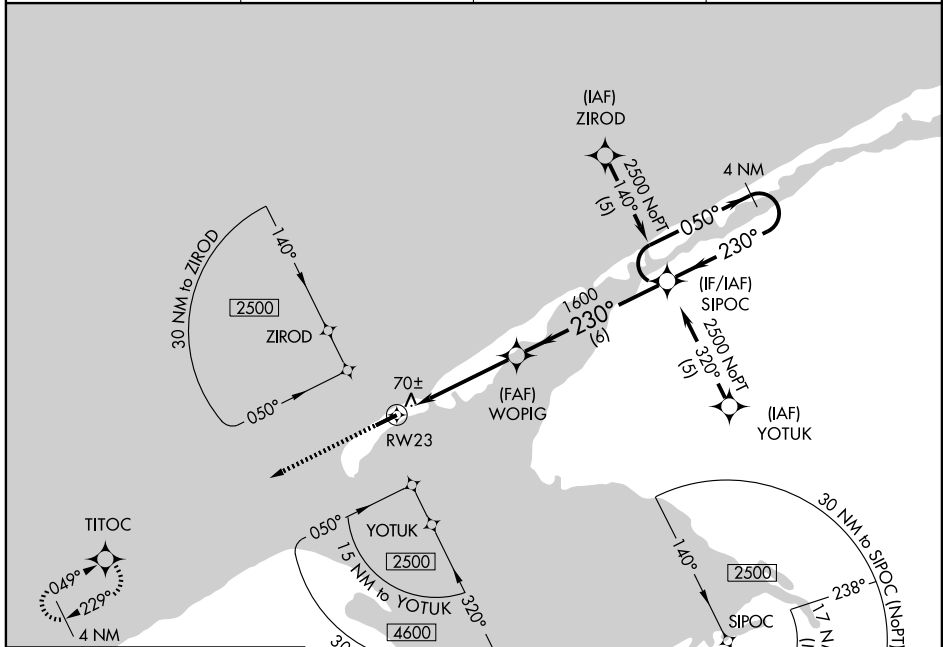


# RNAV (GPS) RWY 23

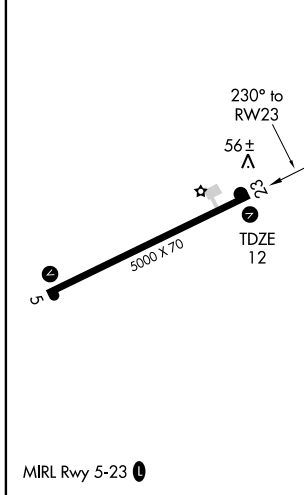
SHISHMAREF (SHH) (PASH)

APP CRS <b>230°</b>	Rwy Idg <b>5000</b> TDZE <b>12</b> Apt Elev <b>12</b>
------------------------	---

DME/DME RNP-0.3 NA.		MISSED APPROACH: Climb to 2500 direct TITOC and hold.	
AWOS-3 <b>121.1</b>	ANCHORAGE CENTER <b>119.2 263.0</b>	NOME RADIO <b>122.4</b>	CTAF <b>123.0</b>



ELEV 12



2500	TITOC	WOPIG	SIPOC	4 NM Holding Pattern
1.1	3.7 NM	6 NM		
RWY 23				
VGSI and descent angles not coincident.				

CATEGORY	A	B	C	D
LNAV MDA	380-1 368 (400-1)			380-1¼ 368 (400-1¼)
CIRCLING	420-1 408 (500-1)	480-1 468 (500-1)	480-1½ 468 (500-1½)	580-2 568 (600-2)

AK, 22 OCT 2009 to 17 DEC 2009

AK, 22 OCT 2009 to 17 DEC 2009