

GRAFORD, TEXAS

AL-6903 (FAA)

NDB or GPS-A

GRAFORD/ POSSUM KINGDOM (F35)

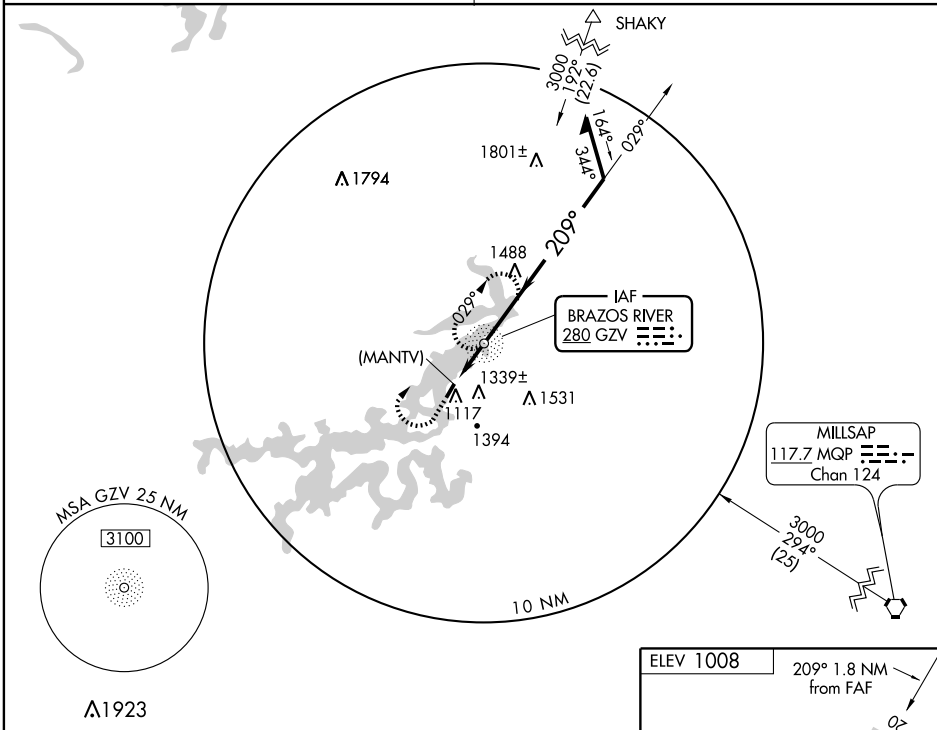
NDB GZV 280	APP CRS 209°	Rwy ldg TDZE Apt Elev	3500 1008 1008
-----------------------	------------------------	-----------------------------	---

Use Mineral Wells altimeter setting, when not received use Fort Worth Meacham altimeter setting.
▲ NA

MISSED APPROACH: Climb to 3000, then right turn direct GZV NDB and hold.

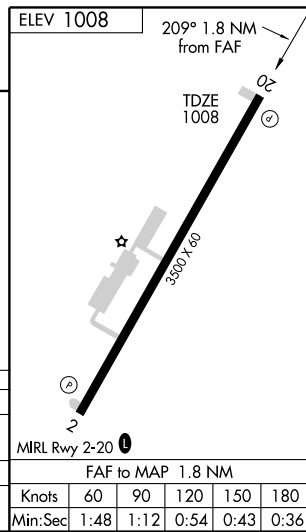
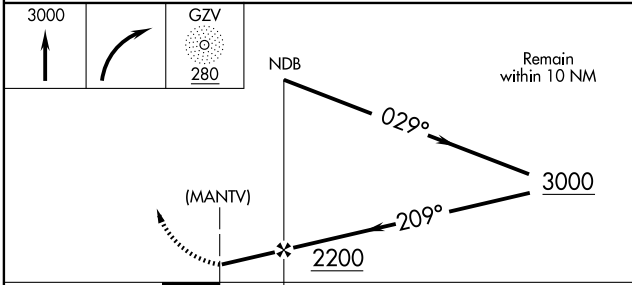
FORT WORTH CENTER
127.0 360.6

CTAF
122.9 0



SC-2, 22 OCT 2009 to 19 NOV 2009

SC-2, 22 OCT 2009 to 19 NOV 2009



CATEGORY	A	B	C	D
CIRCLING	1700-1 692 (700-1)	1740-1 732 (800-1)	1740-2 732 (800-2)	NA
FORT WORTH MEACHAM ALTIMETER SETTING				
CIRCLING	1820-1 812 (900-1)	1860-1¼ 852 (900-1¼)	1860-2½ 852 (900-2½)	NA

FAF to MAP 1.8 NM					
Knots	60	90	120	150	180
Min:Sec	1:48	1:12	0:54	0:43	0:36

GRAFORD, TEXAS
Amdt 1 09239

32°55'N-98°26'W

GRAFORD/ POSSUM KINGDOM (F35)
NDB or GPS-A