

# RNAV (GPS) RWY 29

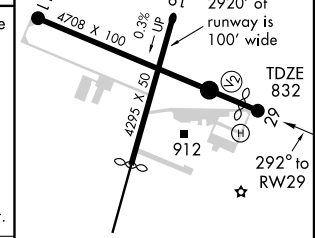
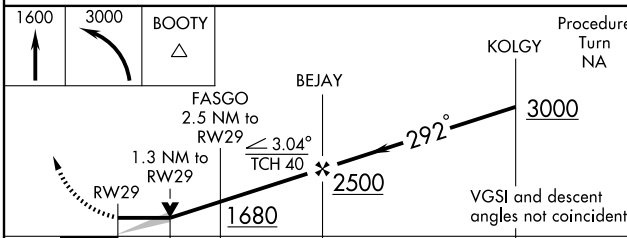
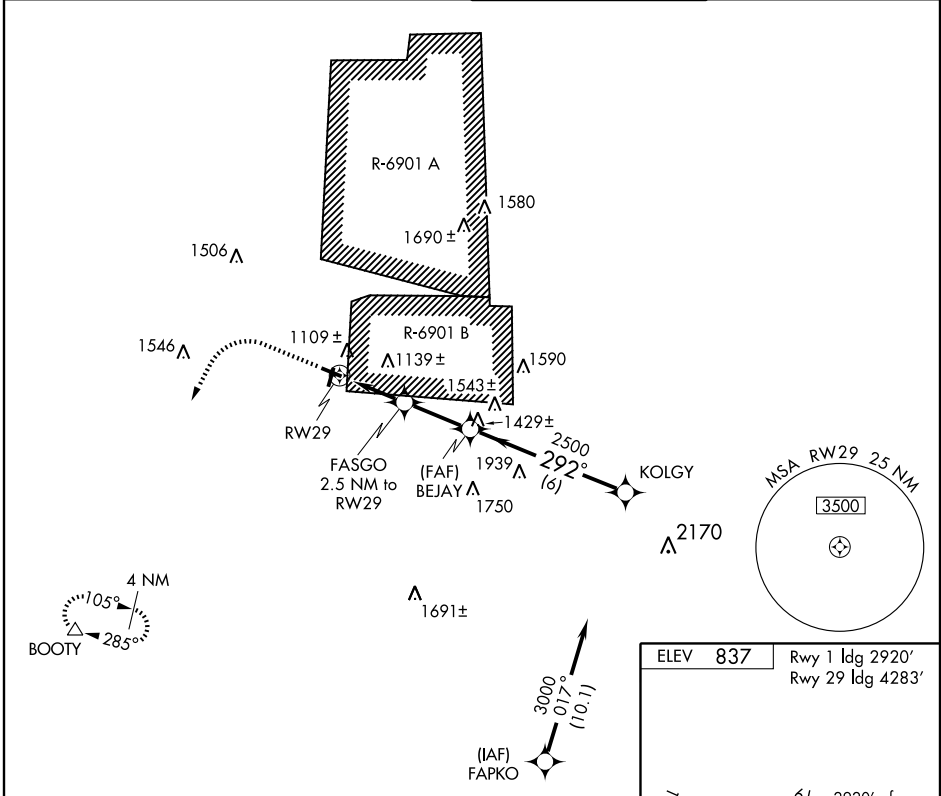
SPARTA/ FORT MC COY (CMY)

APP CRS	Rwy Idg	<b>4283</b>
<b>292°</b>	TDZE	<b>832</b>
	Apt Elev	<b>837</b>

**▽** GPS or RNP-0.3 Required. DME/DME RNP-0.3 NA.  
**△** NA Procedure not authorized when R-6901B active.

MISSED APPROACH: Climb to 1600 then climbing left turn to 3000 direct BOOTY WP and hold.

AWOS-3 <b>118.375</b>	VOLK APP CON ★ <b>135.25 290.8</b>	SPARTA TOWER ★ <b>124.6</b> (CTAF) <b>0 229.4</b>	GCO <b>121.725</b>
--------------------------	---------------------------------------	--	-----------------------



CATEGORY	A	B	C	D
LNVA MDA	1300-1	468 (500-1)	1300-1½ 468 (500-1½)	1300-1½ 468 (500-1½)
CIRCLING	1520-1 683 (700-1)	1540-1 703 (800-1)	1560-2 723 (800-2)	1620-2½ 783 (800-2½)

REIL Rwy 11 and 29 **0**  
 MRL Rwy 1-19 and 11-29 **0**

EC-3, 22 OCT 2009 to 19 NOV 2009

EC-3, 22 OCT 2009 to 19 NOV 2009