

# ILS or LOC RWY 6

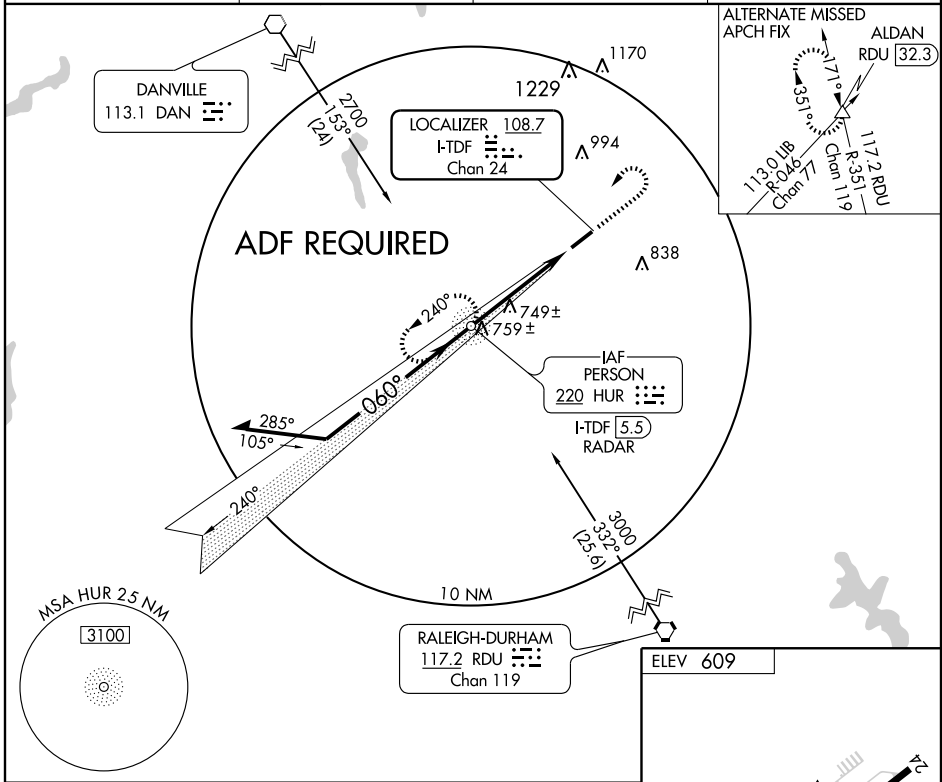
ROXBORO / PERSON COUNTY (TDF)

LOC/DME I-TDF <b>108.7</b> Chan <b>24</b>	APP CRS <b>060°</b>	Rwy Idg <b>5701</b> TDZE <b>601</b> Apt Elev <b>609</b>
---	------------------------	---

For inoperative MALSR, when using Chapel Hill altimeter setting, increase S-ILS 6 all Cats visibility to 1 mile. ADF REQUIRED. When local altimeter setting not received, use Chapel Hill altimeter setting and increase S-ILS 6 DA to 864 and all MDA 80 feet and S-LOC 6 Cat C/D visibility 1/4 mile.

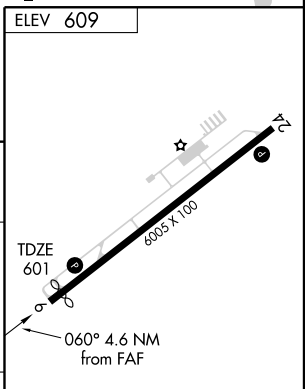
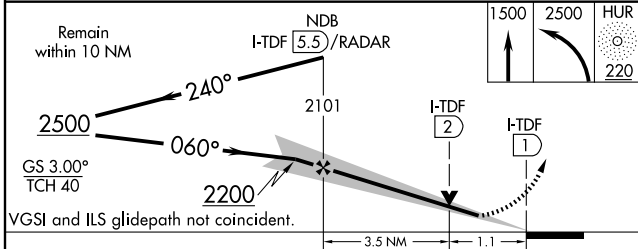
**MISSED APPROACH:**  
Climb to 1500 then climbing left turn to 2500 direct HUR NDB and hold.

AWOS-3 <b>126.725</b>	RALEIGH APP CON <b>132.35 256.9</b>	GCO <b>119.7</b>	UNICOM <b>122.7 (CTAF)</b>
--------------------------	--	---------------------	-------------------------------



SE-2, 22 OCT 2009 to 19 NOV 2009

SE-2, 22 OCT 2009 to 19 NOV 2009



CATEGORY	A	B	C	D
S-ILS 6		801-1/2	200 (200-1/2)	
S-LOC 6		1000-1/2	399 (400-1/2)	1000-3/4 399 (400-3/4)
CIRCLING	1080-1	471 (500-1)	1080-1 1/2 471 (500-1 1/2)	1160-2 551 (600-2)

MIRL Rwy 6-24  
REIL Rwy 6 and 24

FAF to MAP 4.6 NM

Knots	60	90	120	150	180
Min:Sec	4:36	3:04	2:18	1:50	1:32