

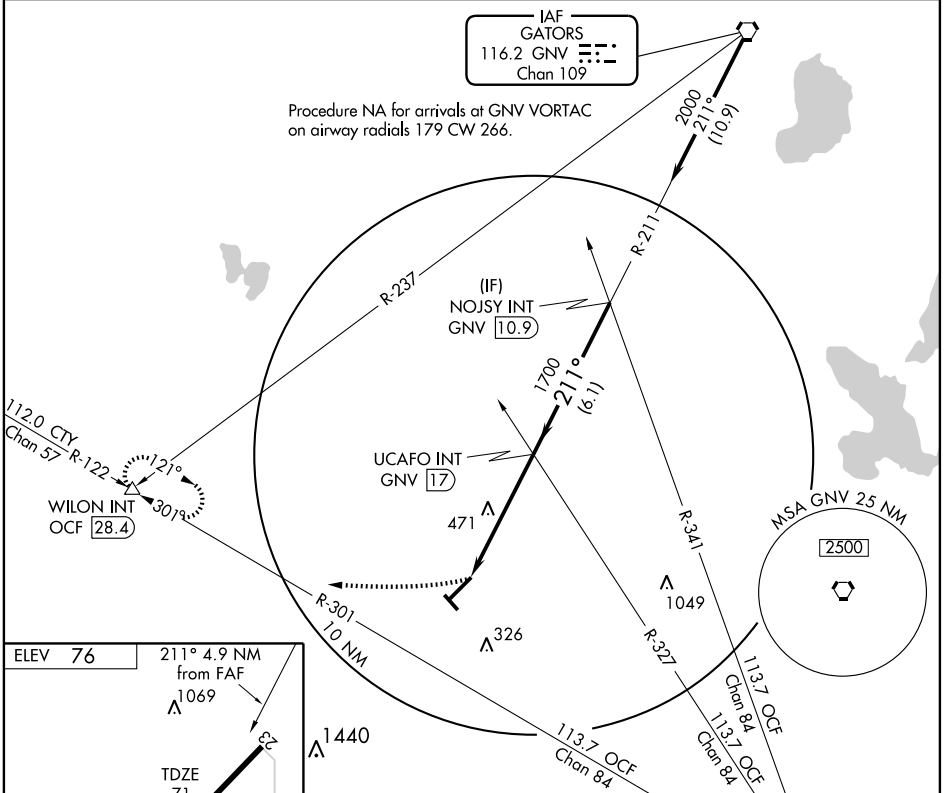
VORTAC GNV <b>116.2</b> Chan <b>109</b>	APP CRS <b>211°</b>	Rwy Idg <b>6668</b> TDZE <b>71</b> Apt Elev <b>76</b>
---	------------------------	---

# VOR RWY 23

WILLISTON MUNI (X60)

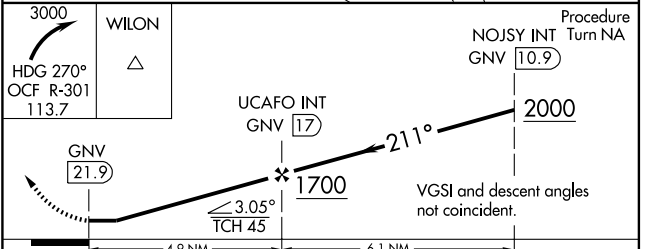
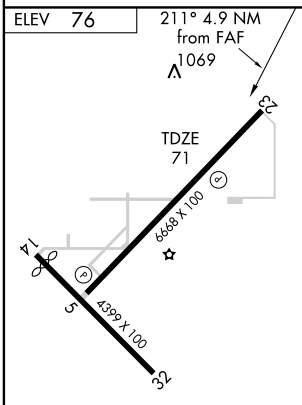
**▽** If local altimeter setting not received, use Ocala altimeter setting and increase all MDAs 60 feet.  
**△** NA MISSED APPROACH: Climbing right turn to 3000 via heading 270° and OCF VORTAC R-301 to WILON Int/OCF 28.4 DME and hold.

AWOS-3 <b>118.425</b>	JACKSONVILLE APP CON <b>118.6 251.15</b>	UNICOM <b>122.8 (CTAF)</b>
--------------------------	---	-------------------------------



SE-3, 22 OCT 2009 to 19 NOV 2009

SE-3, 22 OCT 2009 to 19 NOV 2009



FAF to MAP 4.9 NM					
Knots	60	90	120	150	180
Min:Sec	4:54	3:16	2:27	1:58	1:38

CATEGORY	A	B	C	D
S-23	780-1 709 (800-1)	780-1¼ 709 (800-1¼)	780-2 709 (800-2)	NA
CIRCLING	780-1 704 (800-1)	780-1¼ 704 (800-1¼)	780-2 704 (800-2)	NA